

Date: _____
 Project: _____
 Price: _____

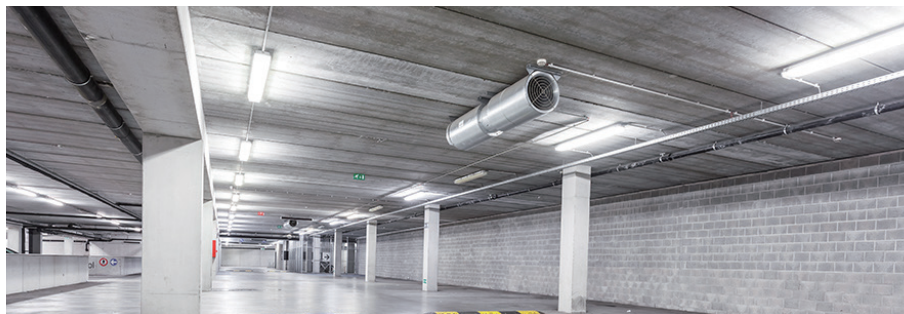
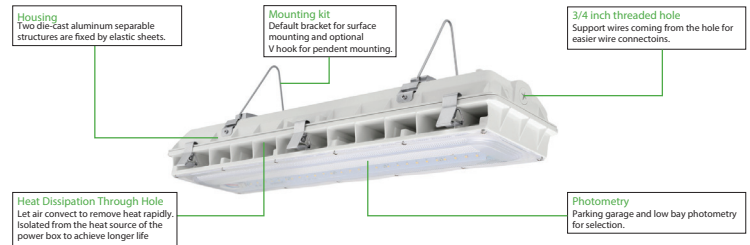
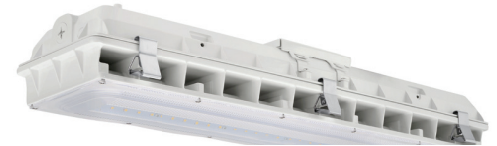
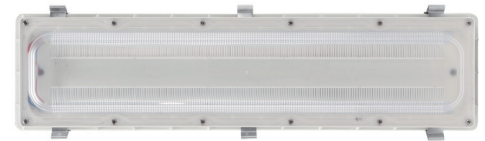
Industrial LED vapor tight light

Application:

Suitable for parking garages (High Lumen series), or commercial, retail and institutional applications including gymnasiums, factories and warehouses.

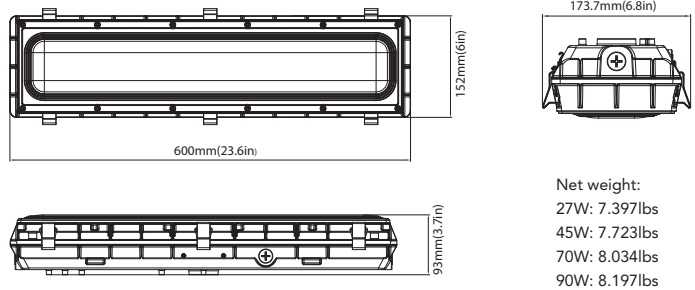
Features:

- **Material:** Two die-cast aluminum separable structures are fixed by elastic sheets.
- **Moisture resistance fixture.**
- **Voltage:** 120VAC-277VAC
- **Surface, or pendant mounting available**
- **Standard 1-10 dimming**
- **Optional:** Emergency backup & Motion sensor
- **Efficient heat dissipation design**
- **Working temperature:** -40°F to 113°F
- **7 year warranty**



Date: _____
 Project: _____
 Price: _____

Dimensions:



Ordering Key

ILVTDMS

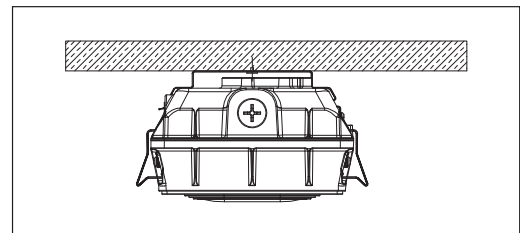
SERIES NUMBER	LENGTH	WATTS/LUMENS	CCT	FINISH	ADDITIONAL OPTIONS
ILVTDMS	2-2FT	45W - 5600LM 70W - 8500LM 95W - 11600LM	4K-4000K 5K-5000K	W-WHITE B-BLACK D-DARK BRONZE	S - SURFACE MOUNTED P - PENDANT DM - 0-10V DIMMING MS-MOTION SENSOR EM-EMERGENCY KIT H-HIGH LUMEN SERIES*
		45W - 6000LM* 70W - 9400LM* 95W - 13000LM*			

SAMPLE ITEM NUMBER: ILVTDMS 2 45W 5K DM H *High Lumen Series, work in parking garages

Installation:

SURFACE MOUNT (DEFAULT SETTING)

Connect wires (voltage to black, white to common, and green to ground);
 Secure the led module to the housing and fasten six latches, ensuring water does not enter fixture.



V-HOOK MOUNTING

1. Put the mounting bracket on the housing, tighten it with screws.
2. Fasten the V hook hang it with the chain.

