

Date: _____
Project: _____
Price: _____

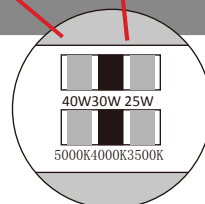
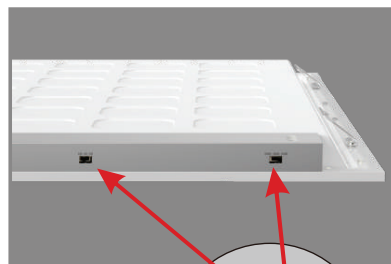
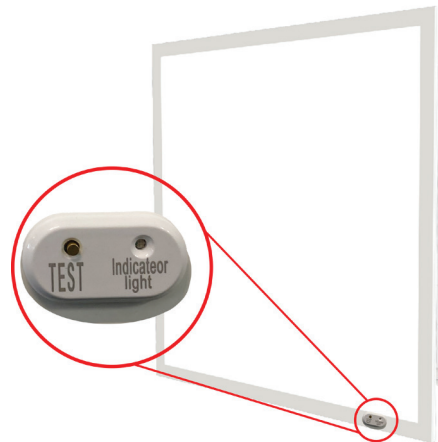
Amazon Multi-Flex LED Emergency Back Lit Panel

Description

Our Amazon multi-flex LED Emergency Backlit Panel is available in 1X4, 2x2, or 2x4. Tunable wattage and CCT options make it easy to alter the brightness or warmth on each fixture. Intelligent Emergency kit guarantees the light will automatically work when the power goes off. Perfect for any office, retail location, or commercial applications.

Features:

- Tunable Wattage:
 - o 1x4: 20W/30W/40W
 - o 2x2: 20W/30W/40W
 - o 2x4: 30W/40W/50W
- Lumen: 125 LM/W
- Tunable Color Options: 3500K/ 4000K/5000K
- Compact and easy to install
- Battery protections: over charge protection, over discharge protection, short circuit protection
- Operating Temperature: -4°F ~ 104°F
- Intelligent emergency automatic detection function.
- L₇₀ Lifetime: >50,000 hours
- 0-10V Dimming
- 7 Year Warranty



Date: _____

Project: _____

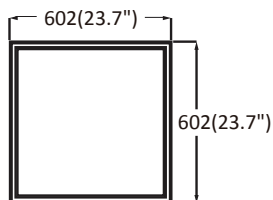
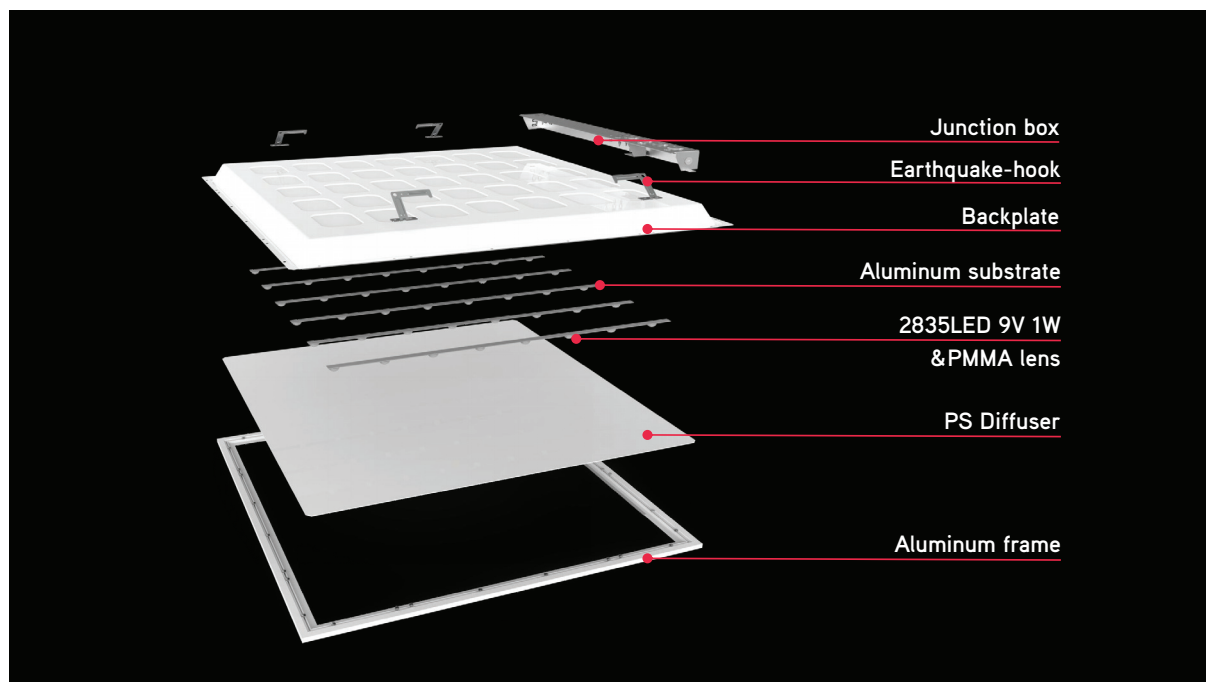
Price: _____

Ordering Key

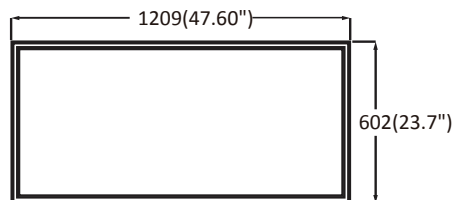
ILPLAMKI				
SERIES NUMBER	SIZES	WATTAGE	CCT	ADDITIONAL OPTIONS
ILPLAMKI	1x4 - 1' x 4'	WT-Wattage Selectable* *25W-30W-40W selectable for 1'x4', and 2'x2' 30W-40W-50W selectable for 2x4	CCT-3500K-4000K-5000K CCT Tunable*	EM - Emergency Backup
	2x2 - 2' x 2'			DM - 0-10V Dimming
	2x4 - 2' x 4'			RC - Recessed
				SM - Surface Mounting
				MS - Motion Sensor

SAMPLE ITEM NUMBER: ILPLAMKI 2X2 WT CCT EM

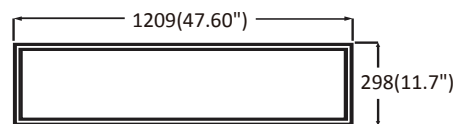
LED Panel Diagram



602*602mm



602*1209mm

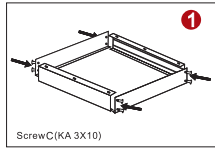
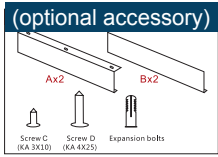


298*1209mm

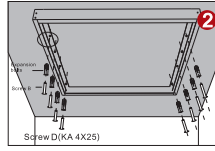


Date: _____
Project: _____
Price: _____

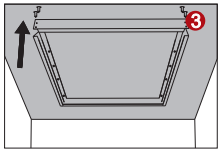
Surface Mounted Frame



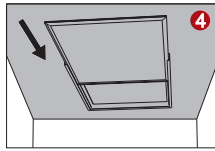
1. Assemble the four frames with Screw C to a whole square.



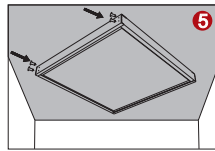
2. Fix the square frames to the ceiling with Screw D.



3. Demount one frame

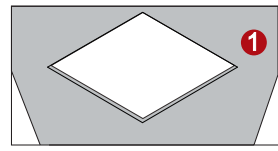


4. Put the panel into the frame square.

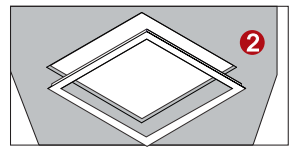


5. Fix the last frame with screw C.

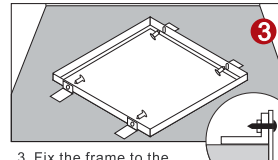
Recessed Frame



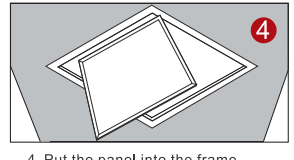
1. Open a hole on the ceiling



2. Fix the frame to the hole



3. Fix the frame to the ceiling with the screws and "L" accessory



4. Put the panel into the frame

Electrical Data

- **Input Power:** Stays consistent over life.
- **Input Voltage:** 120-277V
- **CRI:** >90
- **Operating Temperature:** -4°F ~ 104°F
- **L70 Lifetime:** >50,000 hours.

Controls:

- This LED fixture is equipped with 0-10V dimming that works universally with any standard 0-10V control or dimmer.

Main Features

- 50% energy savings, high brightness and even lighting
- Fast start, no flickering and noise, wide working voltage AC120-277V.
- The latest high efficiency constant current driver, anti-wave interference.
- Lead-free, green environmental protection, meets ROHS requirements.

Application:

- Factory, office building, shopping center, home lighting, etc.

