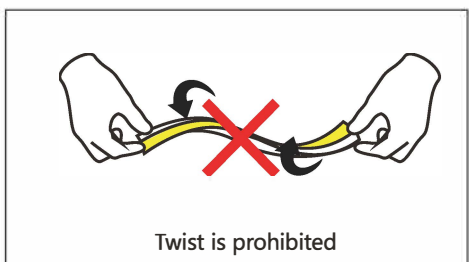
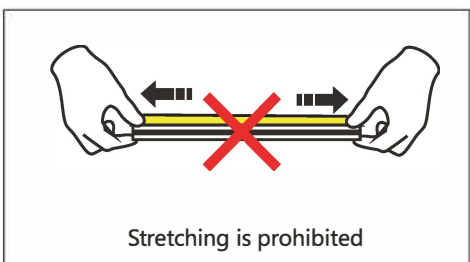


● **Note:**

<p>Bend direction of side emitting version</p>	<p>Reverse bend is prohibited</p>
<p>Bend direction of front emitting version</p>	<p>Reverse bend is prohibited</p>
<p>Suitable for indoor and outdoor applications</p>	<p>Usage under water is prohibited</p>
<p>Side cut with 90 degree</p>	<p>Vertical cut is prohibited</p> <p>Wavy cut is prohibited</p> <p>Bevel angle cut is prohibited</p>



• **Fix by clips**

Fix clips by screws at installation positions

⚠ use chamfer head screw, each meter uses 2~3 clips

chamfer-head button-head

• **Profile or slot installation**

Fix profile by screws at installation positions

⚠ suggest to use the length of profile is shorter around 30mm than neon strip (keep spaces for end caps 15mm*2=30mm);

chamfer-head button-head

Make slot as per dimension of neon strip

⚠ keep tolerance is around +0.2~0.5mm for installing easier

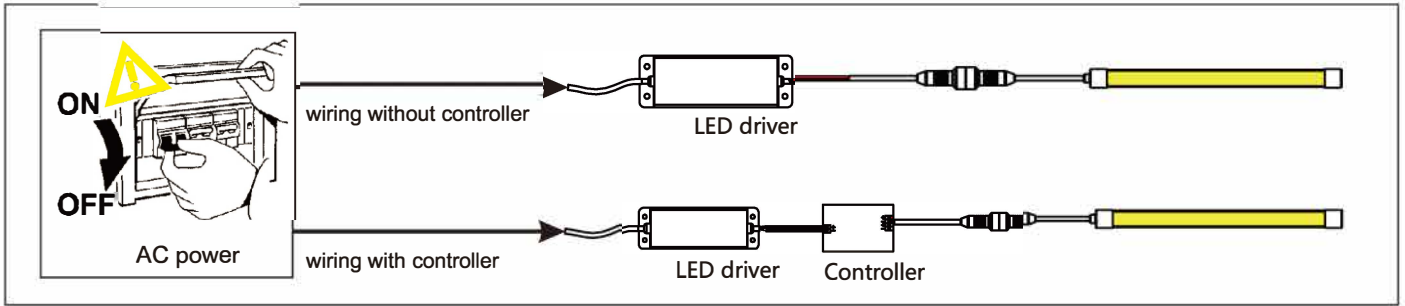
• **Install or uninstall of neon strip**

Install: push neon strip into clips, profile or slot

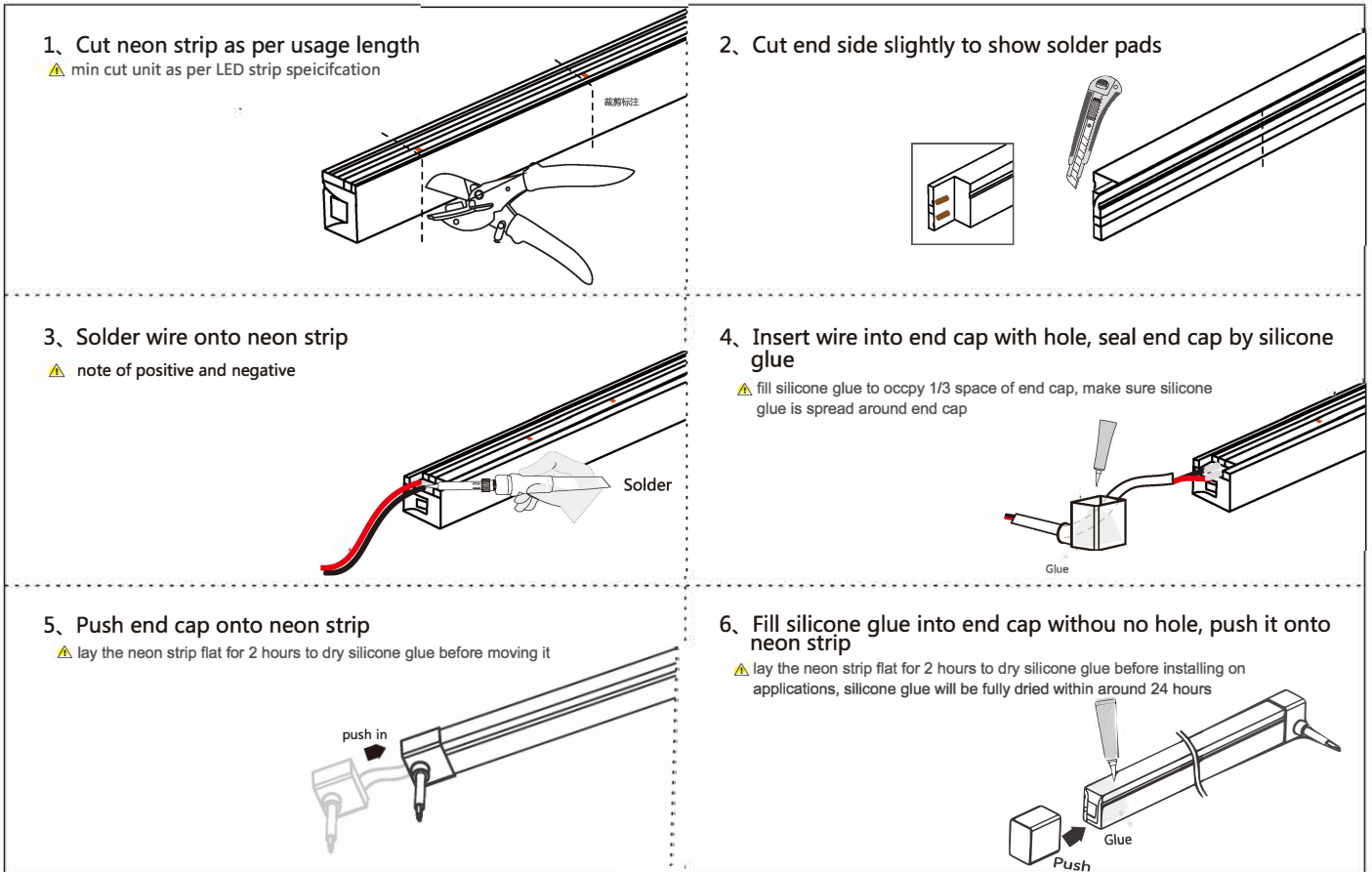
Uninstall: insert plain and smooth tool under neon strip and then pry it

⚠ do not pull neon strip strongly

● **Wiring diagram**



● **Cut + wire solder + seal end caps by silicone glue**



Note:

1. Neon strip could be cut only at the positions with symbol of cutting line.
2. Be aware of positive and negative for wiring, check voltage of LED driver and neon strip, or product might be damaged by mistake.
3. Lit on it for each connection unit when doing series connection of neon strips to check if there is any wrong wiring of positive and negative.
4. Bend neon strip as per instruction (front bend and side bend) within curve radius more than 30/60mm to protect product.
5. Be aware of electric shock, do not touch AC power when LED driver is connected to AC power.

Warranty:

1. Warranty for 3 years at normal usage condition without artificial damage.
2. Warranty would be invalid if there is any wrong handling as below:
 - (1) did not use product in accordance to this manual to damage product.
 - (2) disassemble product by wrong way to damage product.
 - (3) surface of product is severe damaged or deformed.