



i-LUMINOSITY
LED LIGHTING FIXTURES

Date:	_____
Project:	_____
Price:	_____

Fallon Shallow LED IC

DESCRIPTION

This product is UL fire rated and can be protected for 2 hours with a double wall fixture incorporates a non-combustible fiber insulation to prevent flames, toxic gases, and ignition gases from passing through. Suitable for Condominiums, Apartment Buildings, Multi-Family, Commercial and Residential applications.

FEATURES

- UL fire ratings up to 2 hours
- For use in insulated ceilings and non-insulated ceilings.
- Airtight (Per ASTM-E283)
- Quick connect provided
- 13-5/8" to 25" Bar hangers with captive nails and alignment foot
- Housing adjusts from 1-1/2" to accommodate various ceiling thickness
- UL listed for Damp Locations
- UL listed for Wet Locations (with specified trims)

Plaster Frame

- Galvanized steel construction. The housing can be removed from plaster frame to provide access to the junction box.

Housing

- Die formed 22 gauge galvanized steel construction. Housing interior is comprised of a flexible non-combustible insulation.

Junction Box

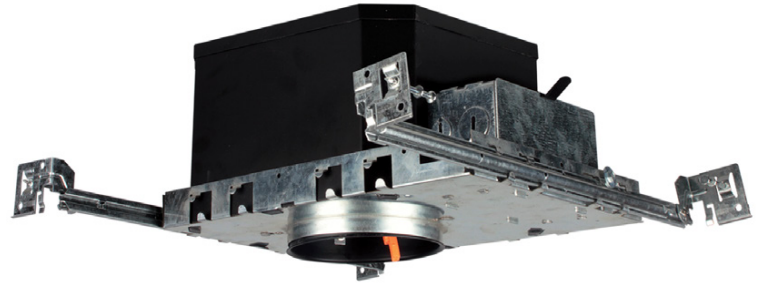
- Listed for through branch circuit wiring.
- Contains one 1-1/8", one 1/2", three 7/8" knockouts and four Romex pryouts with strain relief.

Bar Hanger

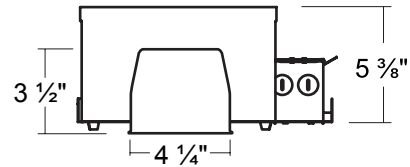
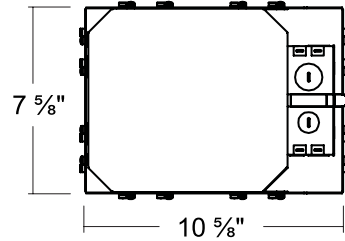
- Pre-installed Real nail easily installs in regular lumber, engineered lumber.
- Bar Hangers are adjustable from 13-5/8" to 25" and can be repositioned 90 degree on plaster frame.
- Swivel bar hanger which is bendable at 90 degree angle will help to install more easily.

Listings

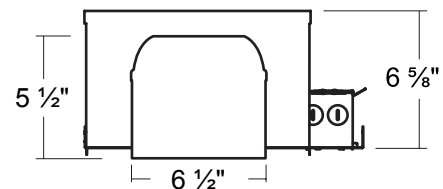
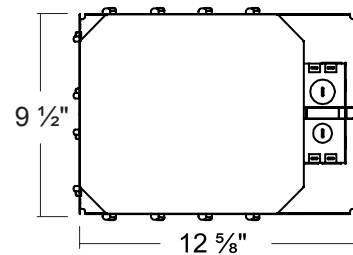
- cULus Listed for Damp Location
- cULus Listed for Wet Location
- cULus Listed for Feed Through
- Certified under ASTM-E283 for Air tight construction



SPECIFICATIONS / DIMENSIONS 4IN



SPECIFICATIONS / DIMENSIONS 6IN





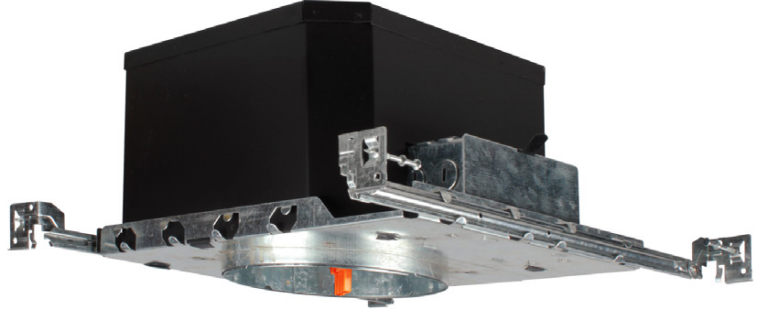
i-LUMINOSITY
LED LIGHTING FIXTURES

Date:	_____
Project:	_____
Price:	_____

6" Shallow LED IC / Non IC Fire Box 2 Hour Fire Rated

FEATURES:

- UL fire ratings up to 2 hours
- For use in insulated ceilings and non-insulated ceilings.
- Airtight (Per ASTM-E283)
- Quick connect provided
- 13-5/8" to 25" Bar hangers with captive nails and alignment foot
- Housing adjusts from 1-1/2" to accommodate various ceiling thickness
- UL listed for Damp Locations
- UL listed for Wet Locations (with specified trims)



Plaster Frame

- Galvanized steel construction. The housing can be removed from plaster frame to provide access to the junction box.

Housing

- Die formed 22 guage galvanized steel construction. Housing interior is comprised of a flexible non-combustible insulation.

Junction Box

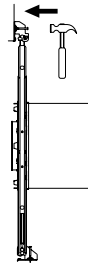
- Listed for through branch circuit wiring.
- Contains one 1-1/8", one 1/2", three 7/8" knockouts and four Romex pryouts with strain relief.

Bar Hanger

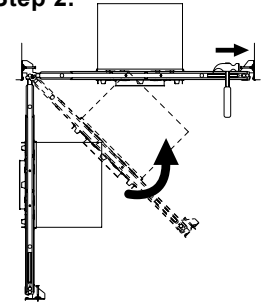
- Pre-installed Real nail easily installs in regular lumber, engineered lumber.
- Bar Hangers are adjustable from 13-5/8" to 25" and can be repositioned 90 degree on plaster frame.
- Swivel bar hanger which is bendable at 90 degree angle will help to install more easily.

INSTALLATION BY SWIVEL BAR HANGER

Step 1.



Step 2.



Ordering Key:

SERIES NUMBER	SIZE	CCT	LENS	FINISH	OPTIONS
ILDRFCCL	4IN - 4IN	-	-	-	-
ILDRFCCL	6IN - 6IN	-	-	-	-

SAMPLE ITEM NUMBER: ILDRFCCL 4IN

