

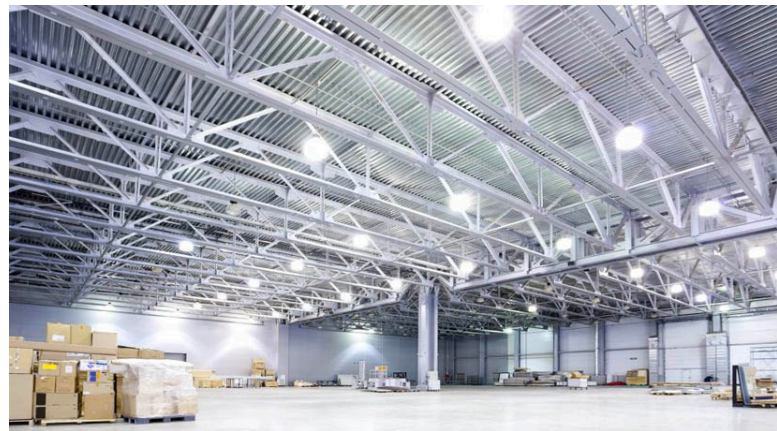
## Garvey High Bay

### Description:

Our Garvey High Bay is available with either a meanwell driver or XSY driver. This fixture can be used as a suspended with a high lumen output of 140LM/W. This fixture is IP65 & IP69K rated making it an ideal fixture for warehouses, exhibition halls, factories, and gymnasiums. , track light, or pendant with it's various mounting options.

### Features:

- Meanwell and XSY drivers optional.
- AC120-277V or AC277-480V
- Wattage: 50W, 80W, 100W, 120W, 150W.
- 140 LM/W
- Beam Spread: 45°/90°/120°
- CRI >90
- Available Color Options: 4000K, 5000K, 5700K.
- Mounting: Suspended.
- IP Rating: IP65 & IP69K
- L70 Lifetime: >50,000 hours.
- Finish: White
- Lighting controls option available.
- 7 Year Warranty.
- Dimensions: 2.4" x 4.3" x 4.7"



## Components:

### Housing

Food grade aluminium IP65& IP69K,  
can be washed directly Yellow/ white  
housing optional

### LED Driver

AC120-277V (Meanwell driver)  
AC120-277V (XSY driver) AC277-  
480V(XSY driver)

### Lens

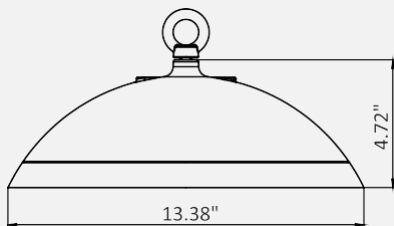
45°/90°/120°optional

### Sensor

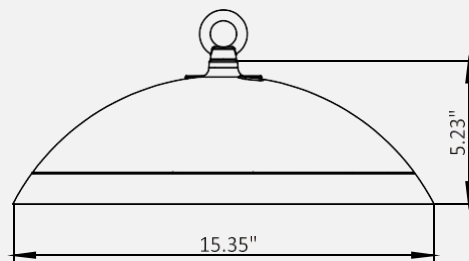
Microwave sensor  
Installed in the middle of Lens

## Dimensions:

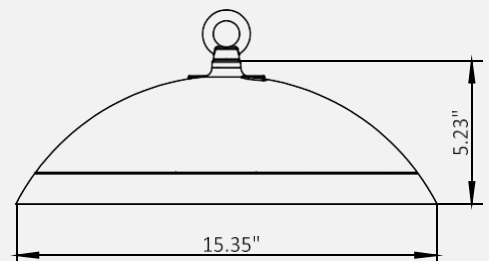
50W/80W/100W (AC120-277V)



120W/150W (AC120-277V)



100W/120W/150W (AC277-480V)



## Ordering Key:

ILHBGHXS

Series #	Size	Power	Efficacy	Lumen	Input voltage	Driver	CCT	Additional Options
ILHBGHXS	Φ13.38"*4.72" (13)	50W	140LM/W	7000LM	AC120-277V (120)	Meanwell, 1-10V dim (MD)	4000K (4)	Microwave Sensor  (MS)
		80W		11200LM				
		100W		14000LM				
	Φ15.35"*5.23" (15)	120W		16800LM				
		150W		21000LM				
	Φ13.38"*4.72" (13)	80W	140LM/W	11200LM	AC120-277V (120)	XSY driver (XSY)	5000K (5)	
		100W		14000LM				
	Φ15.35"*5.23" (15)	120W		16800LM				
		150W		21000LM				
	Φ15.35"*5.23" (15)	100W		140LM/W				
		120W	16800LM					
		150W	21000LM					

**Sample Item Number: ILHBGHXS 13 50W 7000 120 MD 4 MS**

## Electrical Data:

- **Operating Temperature:** -40°- 104° F
- **Input Voltage:** AC120-277V or AC277-480V
- **CRI:** >90
- **L70** >50,000 hours.

## Controls:

- This LED fixture is equipped with 1-10V dimming that works universally with any standard 1-10V control or dimmer.





**i-LUMINOSITY**  
LED LIGHTING FIXTURES

Date: \_\_\_\_\_  
Project: \_\_\_\_\_  
Price: \_\_\_\_\_

## Additional Accessories:



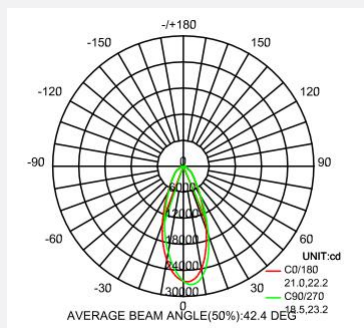
Microwave sensor



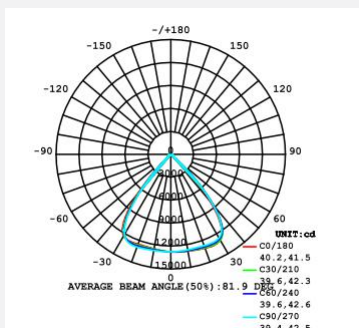
90 deg. PC reflector

## Photometrics:

45°



90°



120°

