

I-Luminosity Refrigeration LED

Challenge: Refrigeration lighting

- ▶ Costly- Factory Parts and drivers
- ▶ Time consuming- chasing down factory parts
- ▶ Multiple technician trips to site needed to complete dispatch
- ▶ Stale lighting dispatches sit on boards for months
- ▶ Obsolete cases
- ▶ Labor out paid and cannot be billed
- ▶ Too many variables, too much un-billable labor
- ▶ Close out service tickets faster and make more profit



SOLUTION: I-Luminosity Refrigeration LED

Introducing the Kensington Retrofit LED solution

- **Designed for the refrigeration industry by the refrigeration industry**
- Near-Universal solution for reach in doors, air screen cases, walk in and prep rooms
- Easy and labor efficient to install- linkable (5 and 6 ft) for fast reach in install
- Built in led driver: 120-277 vac input
- Easy and secure mounting
- Damp location rated- IP44
- 7year warranty
- Available in 4, 5 and 6 ft lengths
- Tested in all major brands of refrigeration units
- UL approved
- Sold in cases of 25
- Available in 3000K, 4000K, 5000K
- Rated life: 50,000 hours

For information or questions contact Pete Marotta 209-814-8129 Pete@i-luminosity.com



Ordering Procedure

Introducing the Kensington Retrofit LED solution

LED Order form and Procedure

I-Luminosity makes a universal direct wire LED for Refrigeration uses.

- ▶ The Kensington LED is a direct wire, screw on solution. No external driver is needed.
- ▶ Our Kensington can be used to replace factory or after-market lighting in the following:
 - reach in doors,
 - air screen cases,
 - walk in coolers
 - Walk in Freezers
 - Prep Rooms
- ▶ For information or questions contact Pete Marotta 209-814-8129 Pete@i-luminosity.com



Ordering Procedure

Introducing the Kensington Retrofit LED solution- Cut sheet

Order form and Procedure

► To ensure tech gets the proper LED ordered, we need the following information:

- Length of existing lighting fixture to be replaced
- Photo from about 6 feet away so we can see the entire door(s)
- Interior photos that show how our Kensington can be mounted
- For information or questions contact Pete Marotta 209-814-8129 Pete@i-luminosity.com



LED Kensington Tube:

Description:

i-Luminosity's Kensington Tubes provide ample lighting or can be directed to a specific location. Available in 3000K, 4000K, or 5000K. Perfect for damp locations, IP44 rating for retrofits or standard fixtures.

Features:

- AC 120-277V
- Rated life: 50,000 hours
- CRI>90
- Available in 3000K, 4000K, 5000K.
- Beam Angle: 120°
- Operating temperature: -20°F ~ 122°F
- 7 Year Warranty.

Ordering Key:

SERIES & NUMBER		WATT/ SIZE/ LUMEN	CCT	LEN	ADDITIONAL OPTIONS
ILTKJTJM		8W - 2FT / 1,120	8K - 3000K	C - CLEAR	
ILTKJTJM		8W8 - 3FT / 930	4K - 4000K	F - FROSTED	
		16W - 4FT / 1,700	6K - 5000K		
		18W - 4FT / 2,100			
		22W - 4FT / 2,420			
		20W6 - 5FT / 2,050			
		22W6 - 5FT / 2,880			
		22W8 - 6FT / 3,000			
		30W - 6FT / 3,930			

SAMPLE ITEM NUMBER: ILTKJTJM 8W 6K C

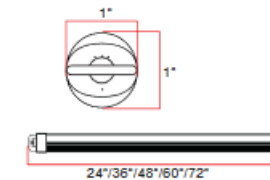


(888)-998-LED5 (5337) | i-luminosity.com | info@i-luminosity.com

Date: _____
Project: _____
Price: _____



Dimensions:



Electrical Data:

- **Input power:** Stays consistent over life
- **Input Voltage:** 100-277V
- **Operating Temperature:** -20F ~ 224F
- **CRI:** >90
- **Life Expectancy:** ~50,000 hours

Installation Instructions:

Retrofit Procedure:

1. Turn OFF power to the fixture at the breaker panel before installation.
2. Remove the fluorescent tubes (A) and dispose of these properly as they may contain mercury.
3. Cut the ballast and/or driver wires nearest to the connector and remove (A).
4. Use mounting holes to install LED tube into the lighting fixture and make AC connections using wire connectors (B).
5. Switch ON power to the fixture at the breaker panel



(888)-998-LED5 (5337) | i-luminosity.com | info@i-luminosity.com

Date: _____
Project: _____
Price: _____

Ordering Procedure

Kensington Retrofit LED solution Order Key

- In stock, ready to ship:
- 4 ft 4000K
- 5 ft 5000K
- 6 ft 5000k

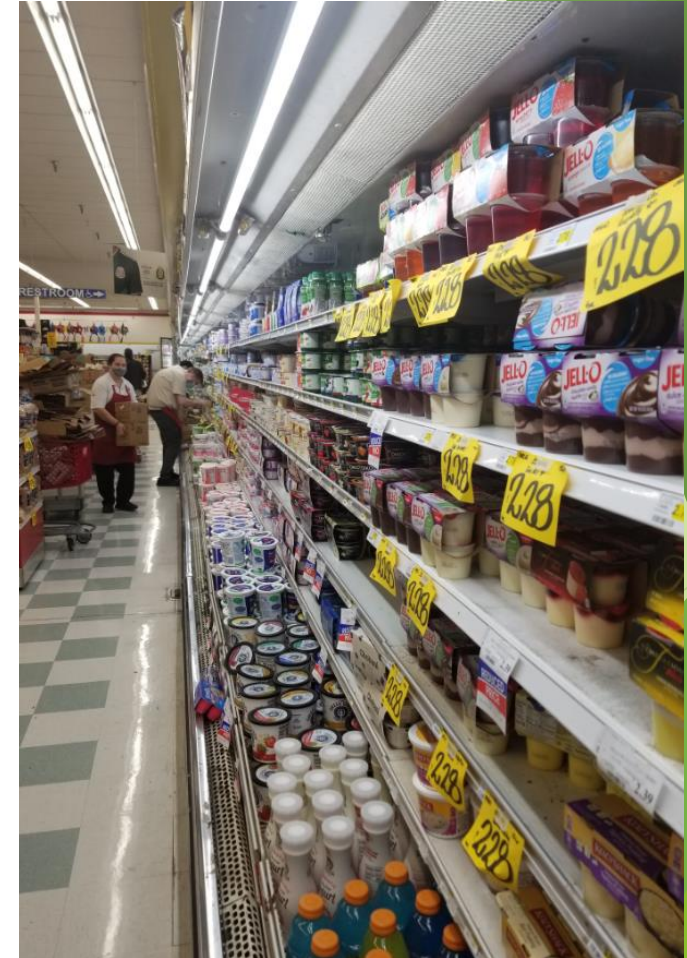
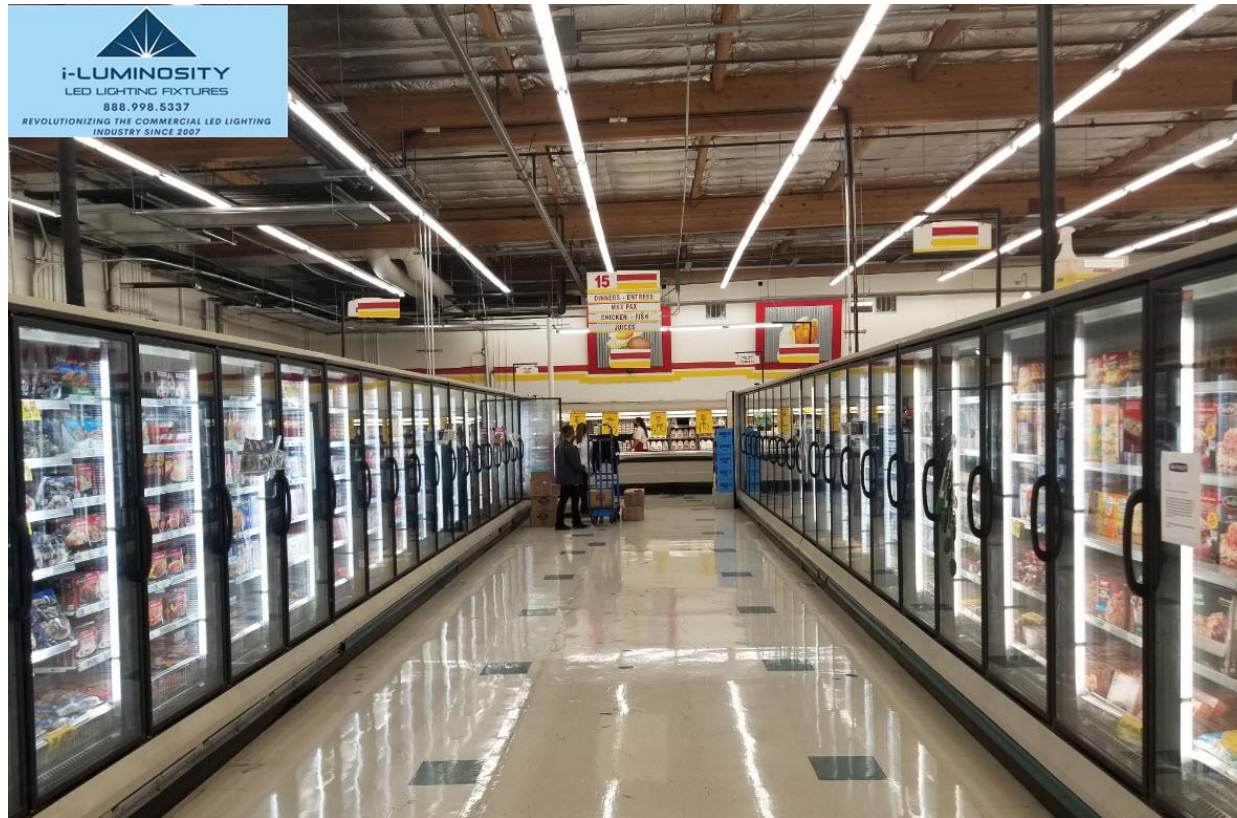
Ordering Key:

ILTKTJM				
SERIES NUMBER ILTKTJM	WATT/ SIZE/ LUMEN	CCT	LENS	ADDITIONAL OPTIONS
	8W - 2FT / 1,120	5K - 5000K	C - CLEAR	
	8WS - 2FT / 920	4K - 4000K	F - FROSTED	
	16W - 4FT / 1,700	5K - 5000K		
	16WS - 4FT / 2,100			
	22W - 4FT / 2,420			
	22WS - 5FT / 2,050			
	22WS - 5FT / 2,850			
	22WS - 6FT / 3,000			
	30W - 6FT / 3,500			

SAMPLE ITEM NUMBER: ILTKTJM 8W 5K C

For information or questions contact Pete Marotta 209-814-8129
Pete@i-luminosity.com

Kensington Near Universal Refrigeration LED



Before



After



Winco- Promotional cases: Before



Winco- Promotional cases: After



Customer Feed Back ! Happy !



Case # 2 Cost Less Foods

- ▶ Older cases
 - ▶ Various mix of sizes and manufacturers
 - ▶ Our Kensingtons were used to convert:
 - ▶ Dairy Doors
 - ▶ Reach in Frozen doors
 - ▶ Air Screen cases
 - ▶ Walk ins
 - ▶ Prep Rooms
- For information or questions contact Pete Marotta
209-814-8129 Pete@i-luminosity.com



Cost less Foods retrofit



Cost less Foods Retrofit-Deli
We eliminated 2 rows of SHO T-12 lamps



Our 6 foot Kensington is perfect for Anthony 6 foot doors. They daisy chain to be labor efficient to install



Cost less Foods retrofit



- For information or questions contact Pete Marotta 209-814-8129
- Pete@i-luminosity.com

Cost less Foods retrofit



- For information or questions contact
Pete Marotta 209-814-8129
- Pete@i-luminosity.com

Cost less Foods retrofit



- For information or questions contact Pete Marotta 209-814-8129
- Pete@i-luminosity.com

Cost less Foods Retrofit- Walk in coolers



- For information or questions contact Pete Marotta 209-814-8129
- Pete@i-luminosity.com

Cost less Foods retrofit Pre Rooms



- For information or questions contact Pete Marotta 209-814-8129
- Pete@i-luminosity.com

Case # 3: Trader Joes



Case # 3: Trader Joes



- For information or questions contact
Pete Marotta 209-814-8129
- Pete@i-luminosity.com

4 ft Kensington used to retrofit lighted shelves



Case #4 Costco



Case #4 Costco



Technician product Feed back:

i-Luminosity's Kensington Tubes provide ample lighting or can be directed to a specific location. Available in 3000K, 4000K, or 5000K. Perfect for damp locations, IP44 rating for retrofits or standard fixtures.

“We have had great success with the Kensington line on lighting retrofits in supermarkets and have yet to come across any other bulb that is as durable as the Kensington. We use the Kensington to retrofit reach in doors and open air screen cases we even use them for prep rooms and walk in coolers.”

“My customers like them as well. The lights are competitively priced and there is no compromise in quality.

The difference is so easy to see. Just installing one of the LEDs, next to what is existing, quickly shows how much more light they produce and how much more the product is illuminated.

These LEDs sell themselves.”

Packed in high quality shipping cases to reduce chances of damage, helps you close out dispatches faster

- For information or questions contact Pete Marotta 209-814-8129
- Pete@i-luminosity.com



Thank you



I-Luminosity Refrigeration LED



Sold in cases of 25 pieces, in Stock for Fast ship

(888)-998-LEDS (5337) | www.i-luminosity.com pete@i-luminosity.com

Retrofit LED solution

- Designed for the refrigeration industry by the refrigeration industry
- Near-Universal solution for reach in doors, air screen cases, walk in and prep rooms
- Easy and labor efficient to install-linkable (5 and 6 ft) for fast reach in install
- Built in led driver: 120-277 vac input
- Easy and secure mounting
- Damp location rated- IP44
- 7year warranty
- Available in 4, 5 and 6 ft lengths
- Tested in all major brands of refrigeration units
- UL approved
- Sold in cases of 25
- Available in 3000K, 4000K, 5000K
- Rated life: 50,000 hours
- Operating temperature: -20°F ~ 122°F
- Beam Angle: 120°
- CRI>90

