

I-Luminosity Refrigeration LED

Challenge: Refrigeration lighting

- ▶ Costly- Factory Parts and drivers
- ▶ Time consuming- chasing down factory parts
- ▶ Multiple technician trips to site needed to complete dispatch
- ▶ Stale lighting dispatches sit on boards for months
- ▶ Obsolete cases
- ▶ Labor out paid and cannot be billed
- ▶ Too many variables, too much un-billable labor
- ▶ Close out service tickets faster and make more profit



SOLUTION: I-Luminosity Refrigeration LED

Introducing the Kensington Retrofit LED solution

- **Designed for the refrigeration industry by the refrigeration industry**
- Near-Universal solution for reach in doors, air screen cases, walk in and prep rooms
- Easy and labor efficient to install- linkable (5 and 6 ft) for fast reach in install
- Built in led driver: 120-277 vac input
- Easy and secure mounting
- Damp location rated- IP44 or IP65
- 7year warranty
- Available in 4, 5 and 6 ft lengths
- Tested in all major brands of refrigeration units
- UL approved
- Sold in cases of 25
- Available in 3000K, 4000K, 5000K
- Rated life: 50,000 hours



Ordering Procedure

Introducing the Kensington Retrofit LED solution

LED Order form and Procedure

I-Luminosity makes a universal direct wire LED for Refrigeration uses.

- ▶ The Kensington LED is a direct wire, screw on solution. No external driver is needed.
- ▶ Our Kensington can be used to replace factory or after-market lighting in the following:
 - reach in doors,
 - air screen cases,
 - walk in coolers
 - Walk in Freezers
 - Prep Rooms



Ordering Procedure

Introducing the Kensington Retrofit LED solution- Cut sheet

Order form and Procedure

To ensure tech gets the proper LED ordered, we need the following information:

- Length of existing lighting fixture to be replaced
- Photo from about 6 feet away so we can see the entire door(s)
- Interior photos that show how our Kensington can be mounted



Date: _____
Project: _____
Price: _____

LED Kensington Tube:

Description:

i-Luminosity's Kensington Tubes provide ample lighting or can be directed to a specific location. Available in 3000K, 4000K, or 5000K. Perfect for damp locations, IP44 rating for retrofits or standard fixtures.

Features:

- AC 120-277V
- Rated life: 50,000 hours
- CRI>90
- Available in 3000K, 4000K, 5000K.
- Beam Angle: 120°
- Operating temperature: -20°F ~ 122°F
- 7 Year Warranty.



Ordering Key:

SERIES NUMBER	WATT® / SIZE / LUMENS	CCT	LENS	ADDITIONAL OPTIONS
ILTKBTJM	9W - 2FT / 1,120	8K - 3000K	C - CLEAR	
	9W6 - 3FT / 930	4K - 4000K	F - FROSTED	
	18W - 4FT / 1,700	6K - 5000K		
	18W - 4FT / 2,100			
	22W - 4FT / 2,420			
	20W6 - 5FT / 2,050			
	22W6 - 5FT / 2,880			
	22W6 - 6FT / 3,000			
	30W - 6FT / 3,530			

SAMPLE ITEM NUMBER: ILTKBTJM 9W 6K C

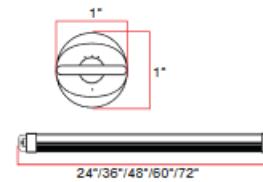


(888)-998-LEDS (5337) | i-luminosity.com | info@i-luminosity.com



Date: _____
Project: _____
Price: _____

Dimensions:



Electrical Data:

- **Input power:** Stays consistent over life
- **Input Voltage:** 100-277V
- **Operating Temperature:** -20F ~ 224F
- **CRI:** >90
- **Life Expectancy:** ~50,000 hours

Installation Instructions:

Retrofit Procedure:

1. Turn OFF power to the fixture at the breaker panel before installation.
2. Remove the fluorescent tubes (A) and dispose of these properly as they may contain mercury.
3. Cut the ballast and/or driver wires nearest to the connector and remove (A).
4. Use mounting holes to install LED tube into the lighting fixture and make AC connections using wire connectors (B).
5. Switch ON power to the fixture at the breaker panel



(888)-998-LEDS (5337) | i-luminosity.com | info@i-luminosity.com

Ordering Procedure

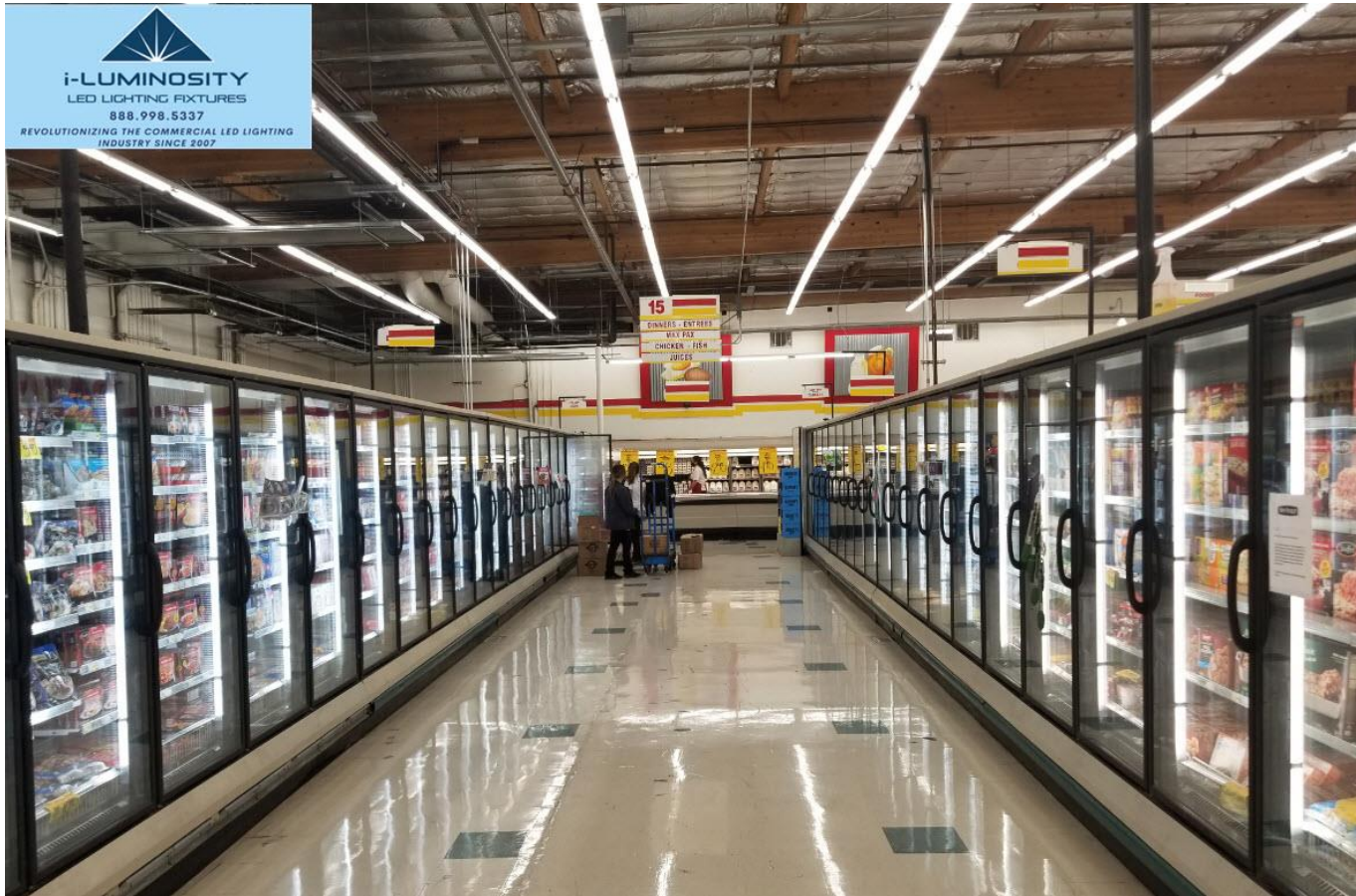
Kensington Retrofit LED solution Order Key

- In stock, ready to ship:
- 4 ft 3000K, 1 side power input
- 4 ft 4000K, 1 or 2 sides power input
- 5 ft 5000K, 2 sides power input
- 6 ft 5000K, 1side power input

SERIES NUMBER	SIZE	WATTS/LUMENS	CCT	LENS	POWER INPUT/IP VALUE
ILTBKTJM	2F - 2FT	8W - 8W / 930	3K - 3000K	C - CLEAR	1S - 1 SIDE / IP44
	3F - 3FT	12W - 12W / 1,400	4K - 4000K	F - FROSTED	
	4F - 4FT	18W - 18W / 2,100	5K - 5000K		
	5F - 5FT	22W - 22W / 2,600			
	6F - 6FT	30W - 30W / 3,550			
ILTBKTTC	4F - 4FT	15W - 15W / 1,800	3K - 3000K	C - CLEAR	2S - 2 SIDES / IP65
	5F - 5FT	20W - 20W / 2,400	4K - 4000K	F - FROSTED	
	6F - 6FT	22W - 22W / 2,650	5K - 5000K		
	8F - 8FT	30W - 30W / 3,600			

SAMPLE ITEM NUMBER: ILTBKTTC 4F 15W 5K C 2S

Kensington Near Universal Refrigeration LED



Before



After



Winco- Promotional cases: Before



Winco- Promotional cases: After



Same Cases
After- I-Luminosity Kensingtons

Customer Feed Back ! Happy !



Case # 2 Cost Less Foods

- ▶ Older cases
- ▶ Various mix of sizes and manufacturers
- ▶ Our Kensingtons were used to convert:
- ▶ Dairy Doors
- ▶ Reach in Frozen doors
- ▶ Air Screen cases
- ▶ Walk ins
- ▶ Prep Rooms



Cost less Foods retrofit



Cost less Foods Retrofit-Deli
We eliminated 2 rows of SHO T-12 lamps



Our 6 foot Kensington is perfect for Anthony 6 foot doors. They daisy chain to be labor efficient to install



Cost less Foods retrofit



Cost less Foods retrofit



Cost less Foods retrofit



Cost less Foods Retrofit- Walk in coolers



Cost less Foods retrofit Pre Rooms



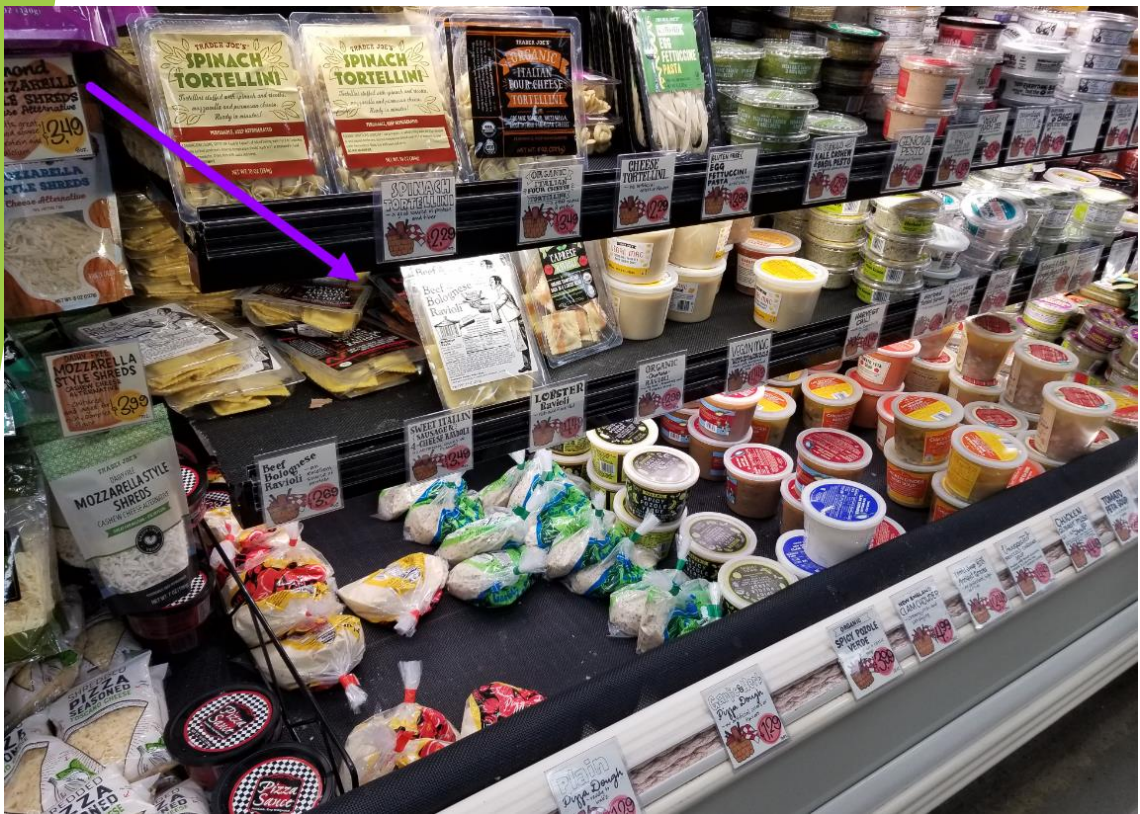
Case # 3: Trader Joes



Case # 3: Trader Joes



4 ft Kensington used to retrofit lighted shelves



Case #4 Costco



Case #4 Costco



Technician product Feed back:

i-Luminosity's Kensington Tubes provide ample lighting or can be directed to a specific location. Available in 3000K, 4000K, or 5000K. Perfect for damp locations, IP44 and IP65 rating for retrofits or standard fixtures.

“We have had great success with the Kensington line on lighting retrofits in supermarkets and have yet to come across any other bulb that is as durable as the Kensington. We use the Kensington to retrofit reach in doors and open air screen cases we even use them for prep rooms and walk in coolers.”

“My customers like them as well. The lights are competitively priced and there is no compromise in quality.

The difference is so easy to see. Just installing one of the LEDs, next to what is existing, quickly shows how much more light they produce and how much more the product is illuminated.

These LEDs sell themselves.”

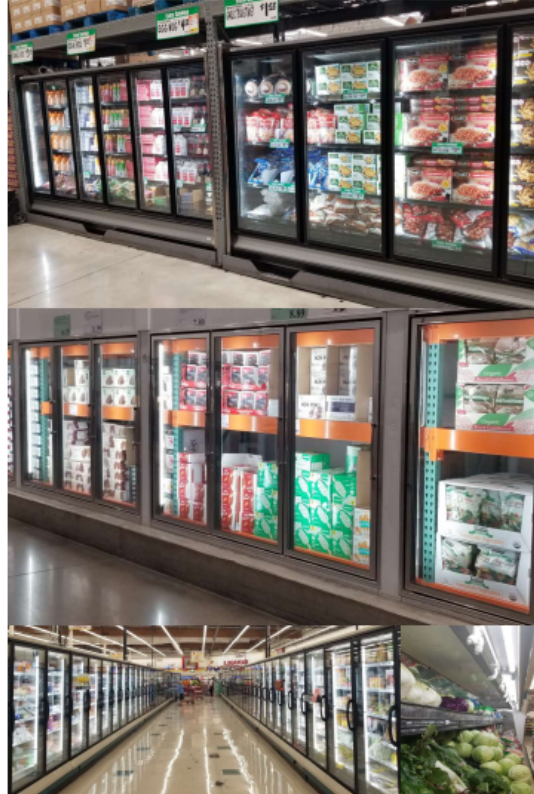
Packed in high quality shipping cases to reduce chances of damage, helps you close out dispatches faster



Thank you!



Customers love our Kensington LED's



"We have had great success with the Kensington line on lighting retrofits in supermarkets and have yet to come across any other bulb that is as durable as the Kensington. We use the Kensington to retrofit reach in doors and open cases, we even use them for prep rooms and walk in coolers." *Norn Furtado*

"My customers like them as well. The lights are competitively priced and there is no compromise in quality. The difference is so easy to see. Just installing one of the LEDs, next to what is existing, quickly shows how much more light they produce and how much more the product is illuminated. These LEDs sell themselves." *Todd C. Casebolt, Foreman*

Why choose Kensington LEDs?

- Designed for the refrigeration industry by the refrigeration industry
- Near-Universal solution for reach in doors, air screen cases, walk in and prep rooms
- One and done repairs
- Easy and labor efficient to install-linkable (5 and 6 ft) for fast reach in install
- Built in led driver: 120-277 vac input
- Easy and secure mounting
- Damp location rated- IP44 or IP65
- 7 year warranty
- Available in 4, 5 and 6 ft lengths
- Tested in all major brands of refrigeration units
- UL approved
- Sold in cases of 25
- Available in 3000K, 4000K, 5000K
- Rated life: 50,000 hours
- Operating temperature: -20°F ~ 122°F
- Beam Angle: 120°, CRI > 90

