

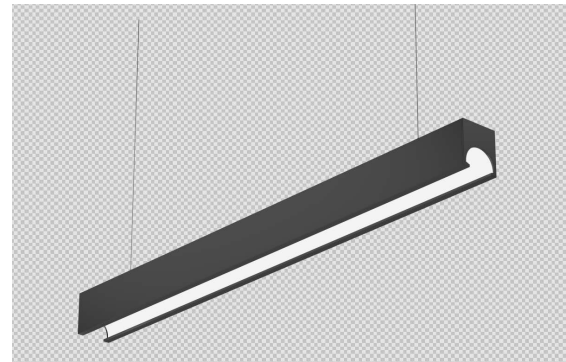
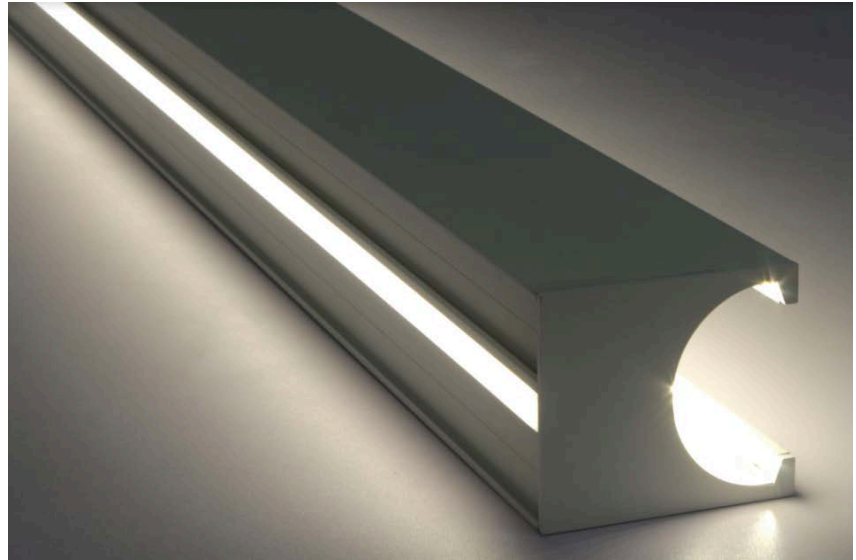
FDR North LED Linear

Description:

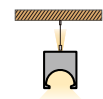
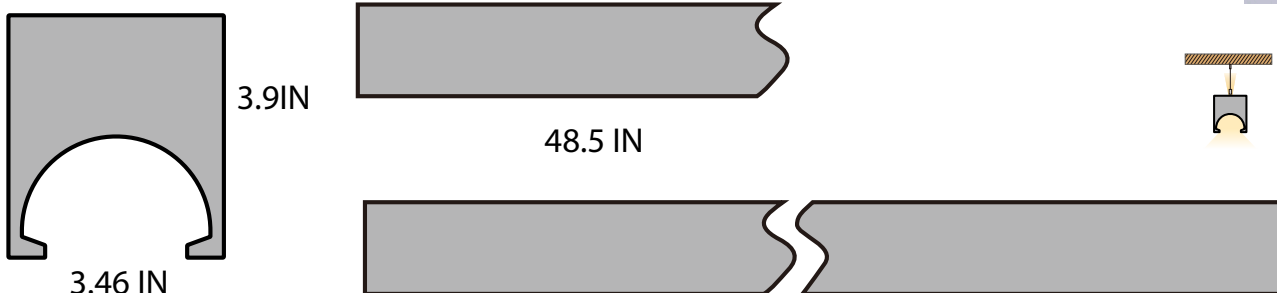
Our FDR North LED Linear is easily linkable to create custom lengths. This fixture has a direct and indirect illumination. With an IP40 rating and multiple mounting options, this fixture is perfect for any offices, retail locations, or lobbies.

Features:

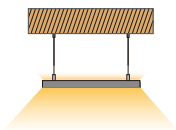
- Input Power: 100~277VAC
- Housing Material: Aluminum + PC cover
- Wattage: 45W; 11W UP & 34W DOWN.
- IP Rating: IP40
- 11.3 W/FT
- 1,100 LM/FT
- CRI >90
- Available Color Options: 3000K, 3500K, 4000K, 5000K or 6000K.
- Available Mounting Options: Suspended or Wall Mounted.
- L70 Lifetime: >50,000 hours.
- Available Finish Options: Silver, White, Black.
- 0-10V dimming option available.
- Lighting controls option available.
- 7 Year Warranty.



Dimensions: 48.5 IN x 3.46 IN x 3.9 IN



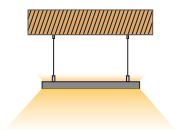
Installation Accessories:



L-PTB



L-PT

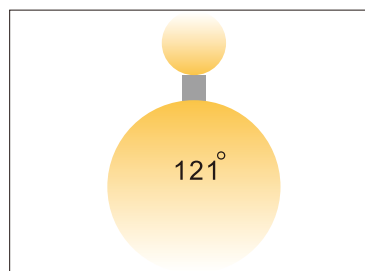
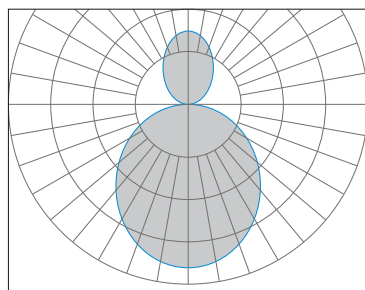
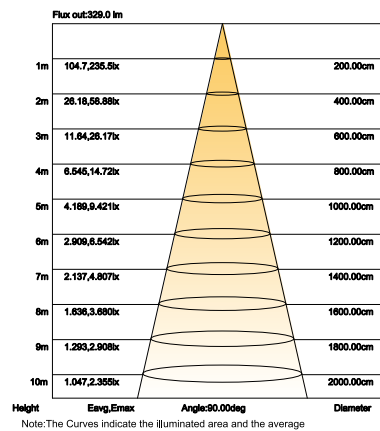
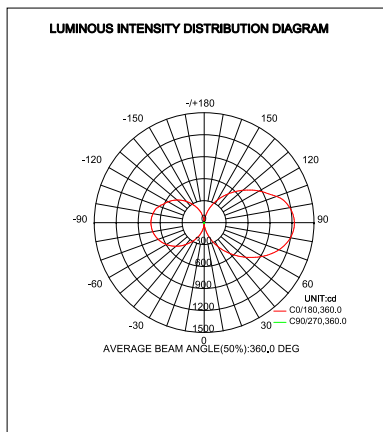


L-PTB-NPF



L-PTB-PF

Photometrics:



Ordering Key:

SERIES NUMBER	WATTS/ SIZE/ LUMENS	CCT	FINISH	ADDITIONAL OPTIONS
ILLNSBV	45W - 4FT/ 3,465	3 - 3000K	S - SILVER	DM - 0-10V DIMMING
	90W - 8FT/ 6,930	35 - 3500K	WH - WHITE	
	X - CUSTOM LENGTHS	4 - 4000K	BL - BLACK	
		5 - 5000K		
		6 - 6000K		

SAMPLE ITEM NUMBER: ILLNSBV 34 4 S DM

Electrical Data:

- **Input Power:** Stays consistent over life.
- **Input Voltage:** 100-277 VAC
- **CRI:** >90
- **L70 Lifetime:** >50,000 hours.

Controls:

- This LED fixture is equipped with 0-10V dimming that works universally with any standard 0-10V control or dimmer.

Optical System:

- A unique combination of reflective & refractive optical components achieves a uniform, comfortable look while eliminating pixelation & color fringing.
- Parts work in unison to optimize light distribution, balancing the high delivery of high illuminance levels on horizontal surfaces with an ideal amount of light on walls and vertical surfaces, increasing perception of spaciousness.

