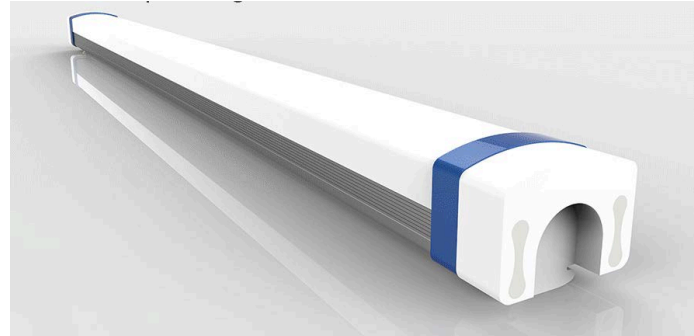


Date:	_____
Project:	_____
Price:	_____

Barclay Vapor Tight Fixture

Description:

Our Barclay Vapor Tight Fixture is designed for outdoor and indoor use. Emitting a bright and even lightspread, this fixture is ideally suited for applications where wide-angle illumination is needed. Having an IP rating of IP66, this fixture is ideal for wet and dry locations, making it perfect for any application.

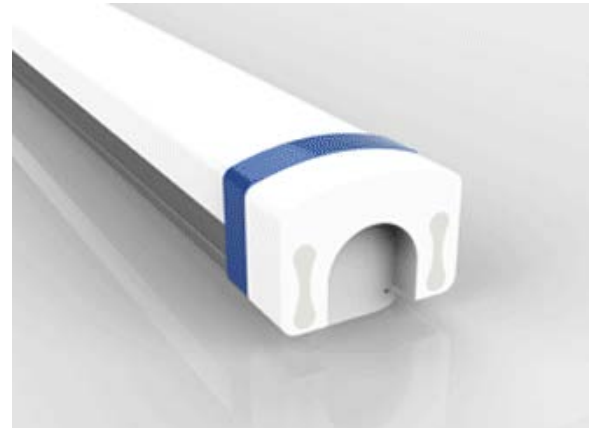
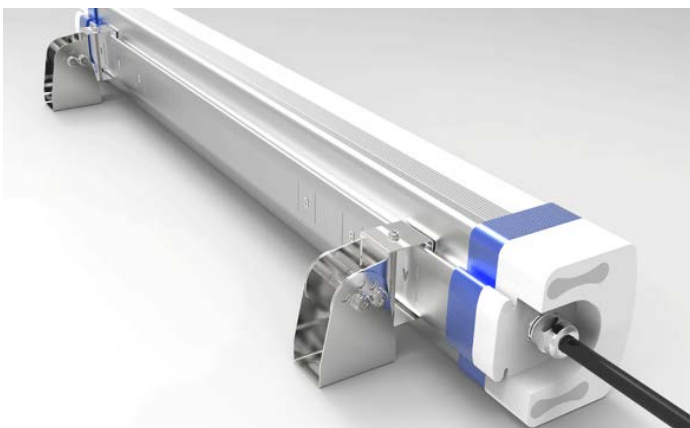


Features:

- Beam Angle: 120
- Input Power: 100-277VAC
- Power Consumption: 20W, 30W, 40W, 65W or 80W
- Lumen Output: 105Lm/W.
- 0-10V dimmable option available.
- Emergency backup option available (up to 3 hours).
- Lighting controls option available.
- CRI >90
- IP Rating: IP66 - wet locations.
- Available Mounting Options: Suspended or surface mounted.
- Available Color Options: 3000K, 4000K, 5000K or 6500K.
- Operating Temperature: -4°F ~ 122°F
- L70 Lifetime: >50,000 hours.
- Linkable Option available (with a customizable cable length).
- 7 Year Warranty.
- Dimensions (L): 2FT, 3FT, 4FT, 5FT
(W) 3.3IN (H) 2.8IN

Applications:

- Parking Garages
- Schools
- Workshops
- Retail
- Warehouses
- Hallways



Date:	_____
Project:	_____
Price:	_____

Ordering Key:

SERIES NUMBER	SWATTS/ SIZE/ LUMENS	CCT	LENS	ADDITIONAL OPTIONS
ILVTMPFL	20w - 2FT/ 2,100	3 - 3000K	F - FROSTED	DM - 0-10V DIMMING
	30w - 3FT/ 3,150	4 - 4000K	C - CLEAR	EM - EMERGENCY BACKUP
	40w - 4FT / 4,200	5 - 5000K		MS - MOTION SENSOR
	65w - 5FT/ 6,825	65 - 6500K		
	80w - 5FT / 8,400			

SAMPLE ITEM NUMBER: ILVTMPFL 20 3 F DM

Electrical Data:

- **Input Power:** Stays consistent over life.
- **Input Voltage:** 100-277 VAC
- **CRI:** >90
- **L70 Lifetime:** >50,000 hours.

Controls:

- This LED fixture can be equipped with 0-10V dimming that works universally with any standard 0-10V control or dimmer.
- This fixture has an emergency backup option available in event of a power outage.

Optical System:

- A unique combination of reflective & refractive optical components achieves a uniform, comfortable look while eliminating pixelation & color fringing.
- Parts work in unison to optimize light distribution, balancing the high delivery of high illuminance levels on horizontal surfaces with an ideal amount of light on walls and vertical surfaces, increasing perception of spaciousness.

