

5 Borough Canopy

Installation Instructions



IMPORTANT

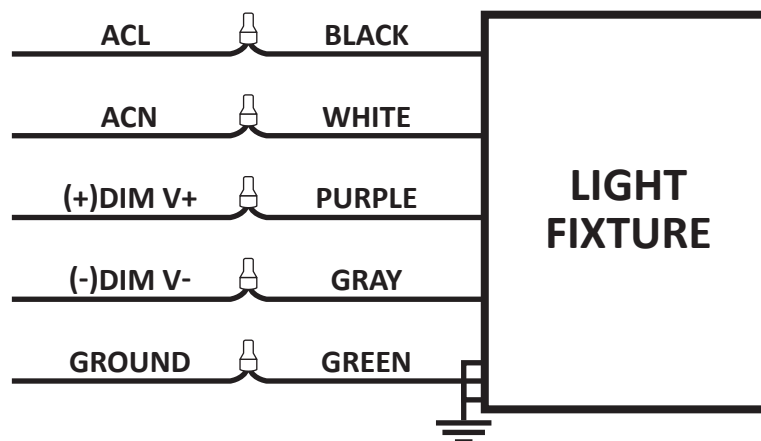
**IMPORTANT: READ INSTUCTIONS CAREFULLY BEFORE INSTALLING.
KEEP THESE INSTRUCTIONS FOR FUTURE REFERENCE.**

- CAUTION: DO NOT USE ELECTRIC GENERATOR TO TEST THE LED FIXTURE.
- CAUTION: TO AVOID ELECTRICAL SHOCK AND DAMAGE, PLEASE DO NOT INSTALL WHEN RAINING.
- WARNING: TO PREVENT ELECTRIC SHOCK OR RISK OF FIRE, THE INSTALLATION MUST BE COMPLETED BY OPERATOR WITH PROFESSIONAL ELECTRICAL KNOWLEDGE.
- WARNING: PLEASE WEAR GLOVES TO AVOID INJURY DURING INSTALLATION.
- WARNING: DURING OR AFTER INSTALLATION, IF THERE ARE SITUATIONS SUCH AS SMOKE OR FIRE IN THE WIRES OR FIXTURES, PLEASE TURN OFF POWER IMMEDIATELY AND CONTACT A QUALIFIED ELECTRICIAN.
- SUITABLE FOR OUTDOOR USE.
- MIN 75°C (167°F) SUPPLY CONDUCTOR.
- THIS PRODUCT MUST BE INSTALLED IN ACCORDANCE WITH THE APPLICABLE INSTALLATION CODE BY A PERSON FAMILIAR WITH THE CONSTRUCTION AND OPERATION OF THE PRODUCT AND THE HAZARDS INVOLVED.

WIRING DIRECTIONS

3 DIFFERENT DIMMING FUNCTIONS ARE AVAILABLE IN THIS LIGHT FIXTURE:

1. Constant current can be achieved by 1-10V DC dimming.
2. PWM signal dimming.
3. Variation of resistance unit dimming.

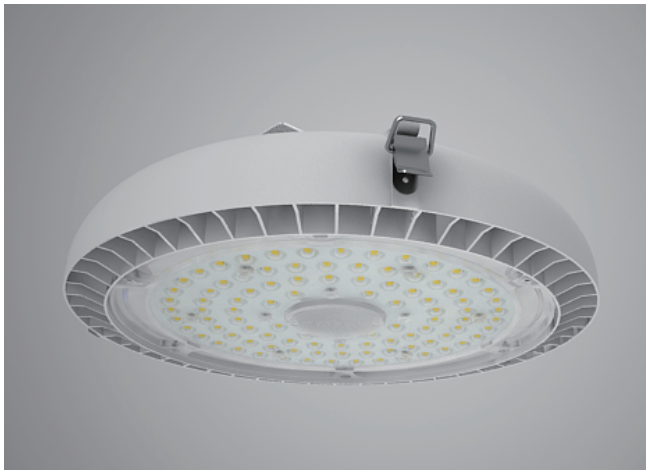


Note: Do not connect DIM V+ (purple)/ DIM V- (gray) to line voltage or supply ground.

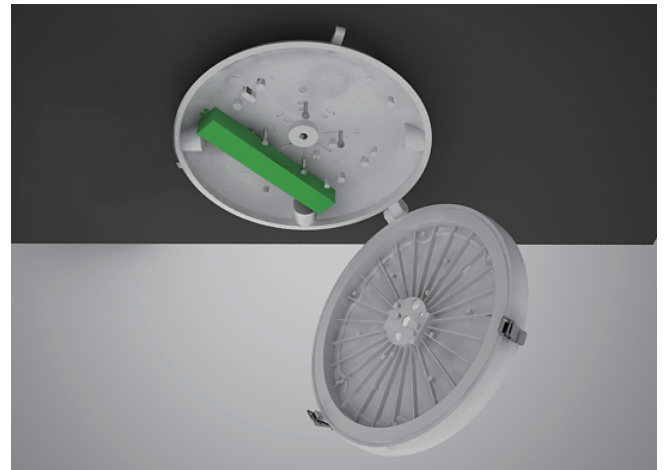
INSTALLATION

Surface-Mount without Bracket

1. Unlock the buckles to open the lamp and divide the back fixture from the front fixture.
2. Fix the back fixture onto the Junction box. Drill the holes necessary as figure shows.
3. Put the wires through the center hole and connect the wires of driver as figure shows.
4. Combine together the lamp and connect the positive and negative wires of driver with the orange connector. Lock the buckles to close the lamp.



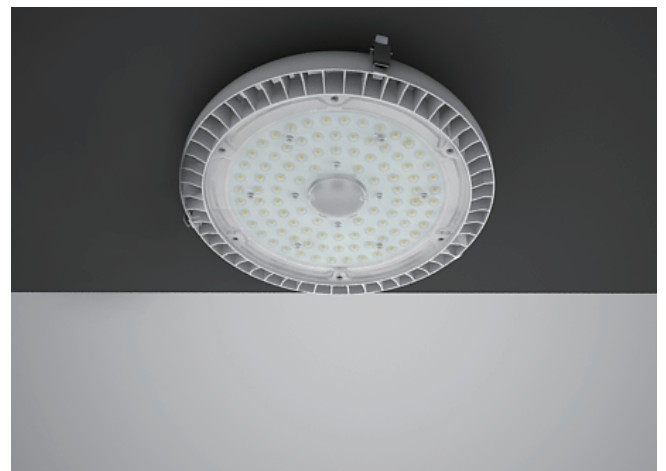
①



②



③

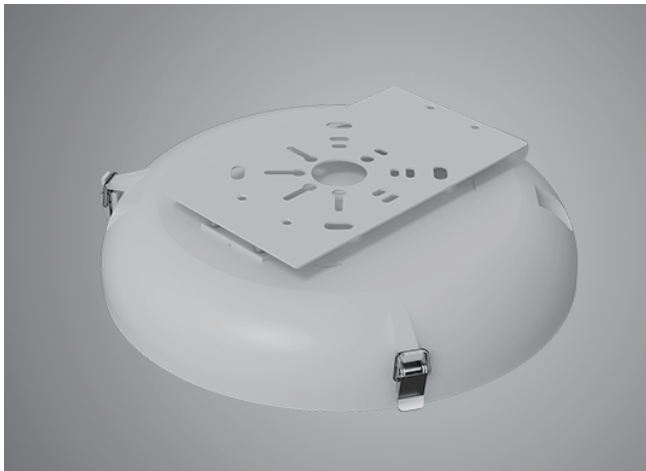


④

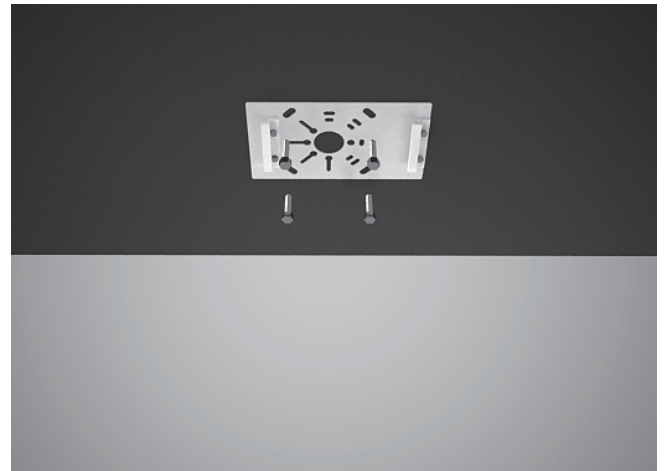
INSTALLATION

Surface-mount with J-box Plate

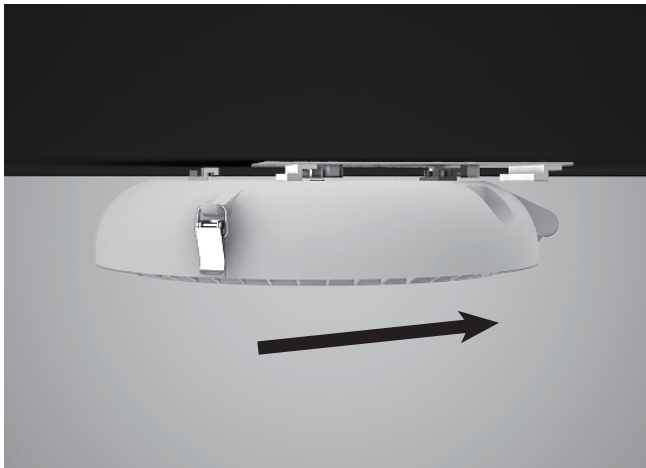
1. Fix the connecting plate onto the Junction box and put the wire through center hole.
2. Buckle the connecting plate into the clips and connect the wires as following shows
3. Slide lamp back into the connecting plate



①



②



③

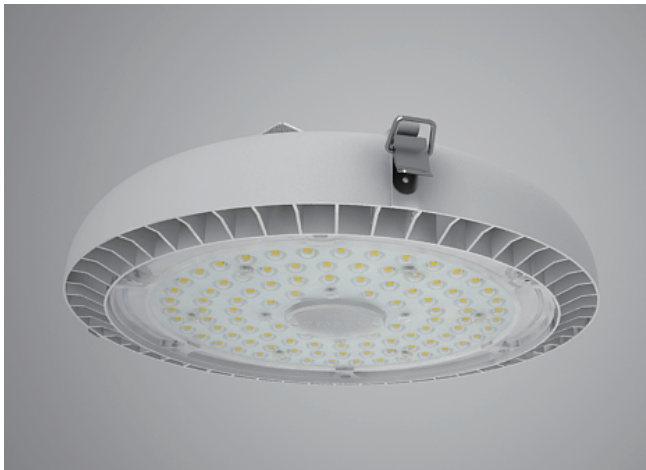


④

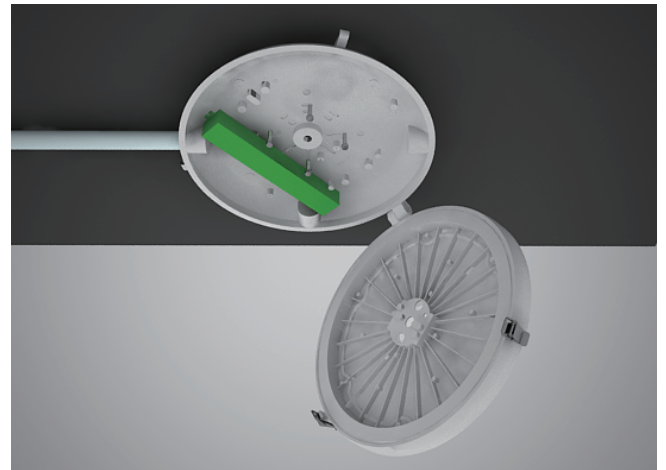
INSTALLATION

Surface-Mount with Side-wiring

- 1.Unlock the buckles to open the lamp and divide the back fixture from the front fixture.
- 2.Fix the back fixture onto the ceiling. Remove the 1/2" screw nut against the direction that intended to connect the conduit. Insert the conduit into back fixture and connect the wires.
3. Combine together the lamp and connect the positive and negative wires of driver with the orange connector. Lock the buckles to close the lamp.



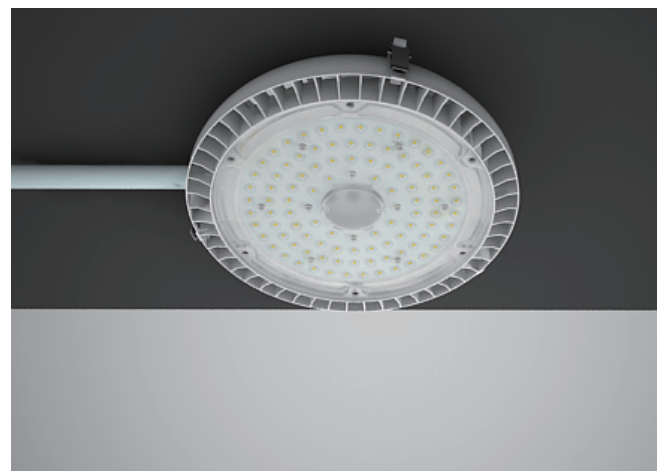
①



②



③



④

INSTALLATION

Pendant Mount with 1/2" Conduit

- 1.Unlock the buckles to open the lamp and divide the back fixture from the front fixture.
- 2.Insert the 1/2" plug into the center hole of the back fixture and connect the wires as follow figure. Screw the back fixture and conduit pole together tightly.
- 3.Combine together the lamp and connect the positive and negative wires of driver with the orange connector. Lock the buckles to close the lamp.



①



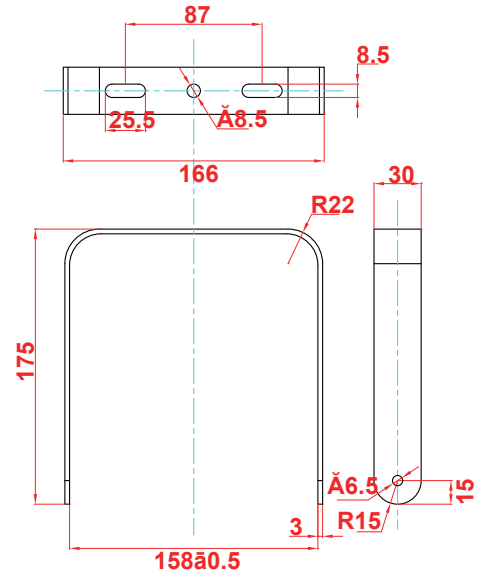
②



③

INSTALLATION

Trunnion Mount



IMPORTANT

Do not attempt to service the LED driver for reduce the risk of electric shock. The use of accessory equipment may cause an unsafe condition. Do not use this product for other than intended use. Refer any servicing indicated by these checks to a Qualified Service Personnel.

CLEANING

CAUTION: Be sure fixture temperature is cool enough to touch. Do not clean or maintain while fixture is energized.

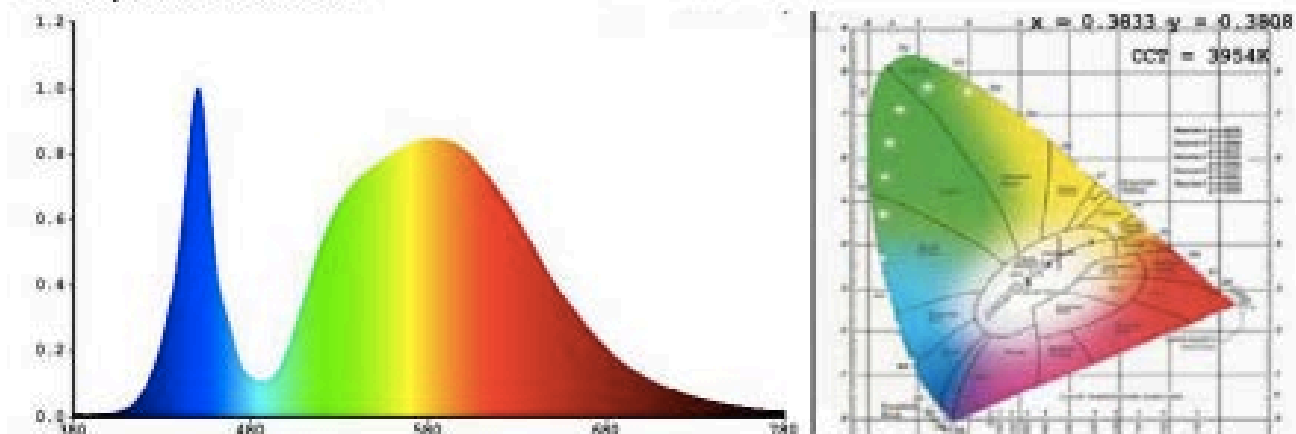
1. Lens should be washed in a solution of warm water and any mild, non abrasive household detergent, rinsed with clean water and wiped dry. Do not use chemicals to clean fixture.
2. Do not open fixture to clean the LED. Do not touch the LED.

TROUBLESHOOTING

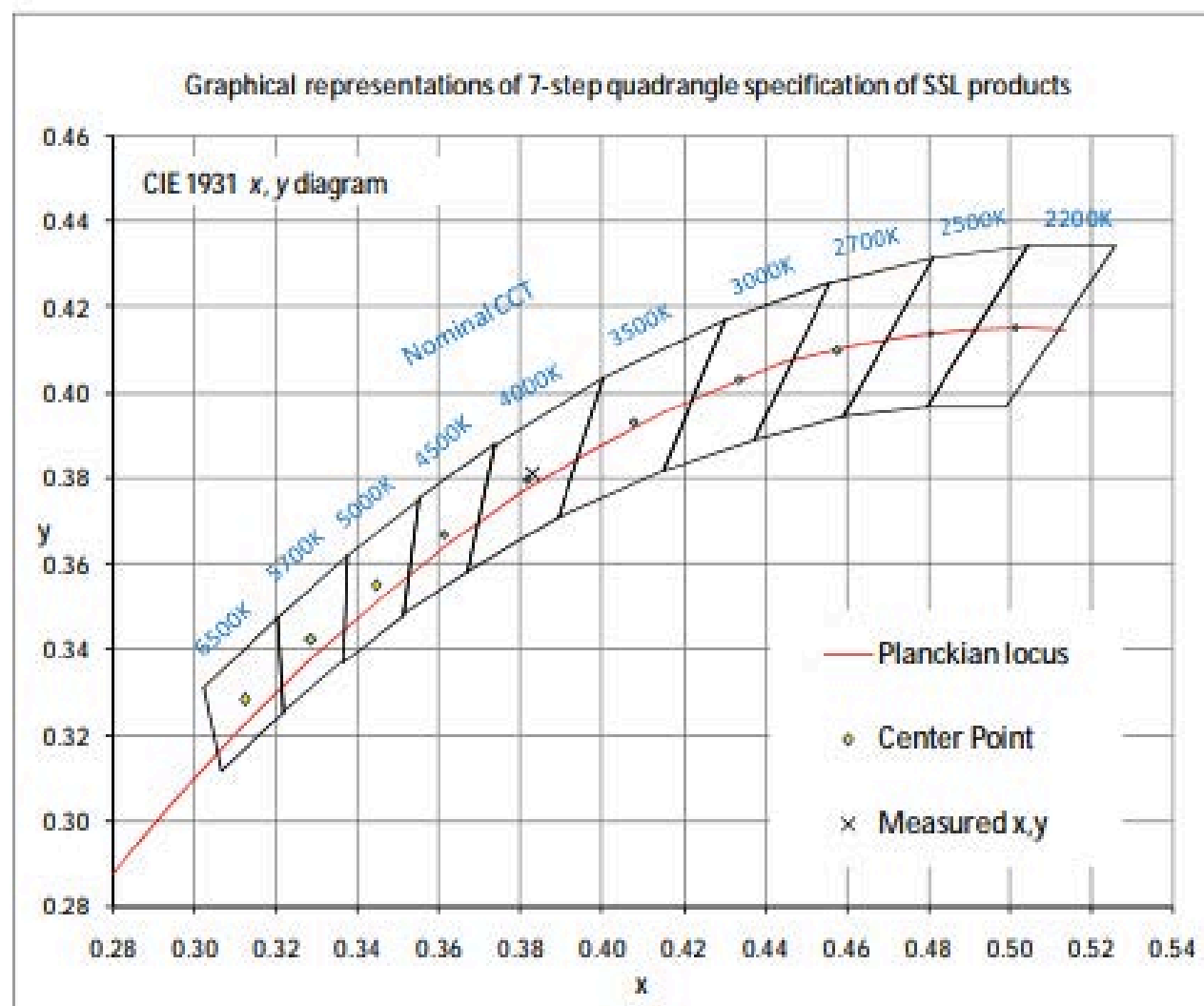
1. Check that the line voltage at fixture is correct. Refer to wiring directions.
2. Be sure the fixture is grounded properly.

PHOTOMETRICS:

4.1 Spectral Distribution

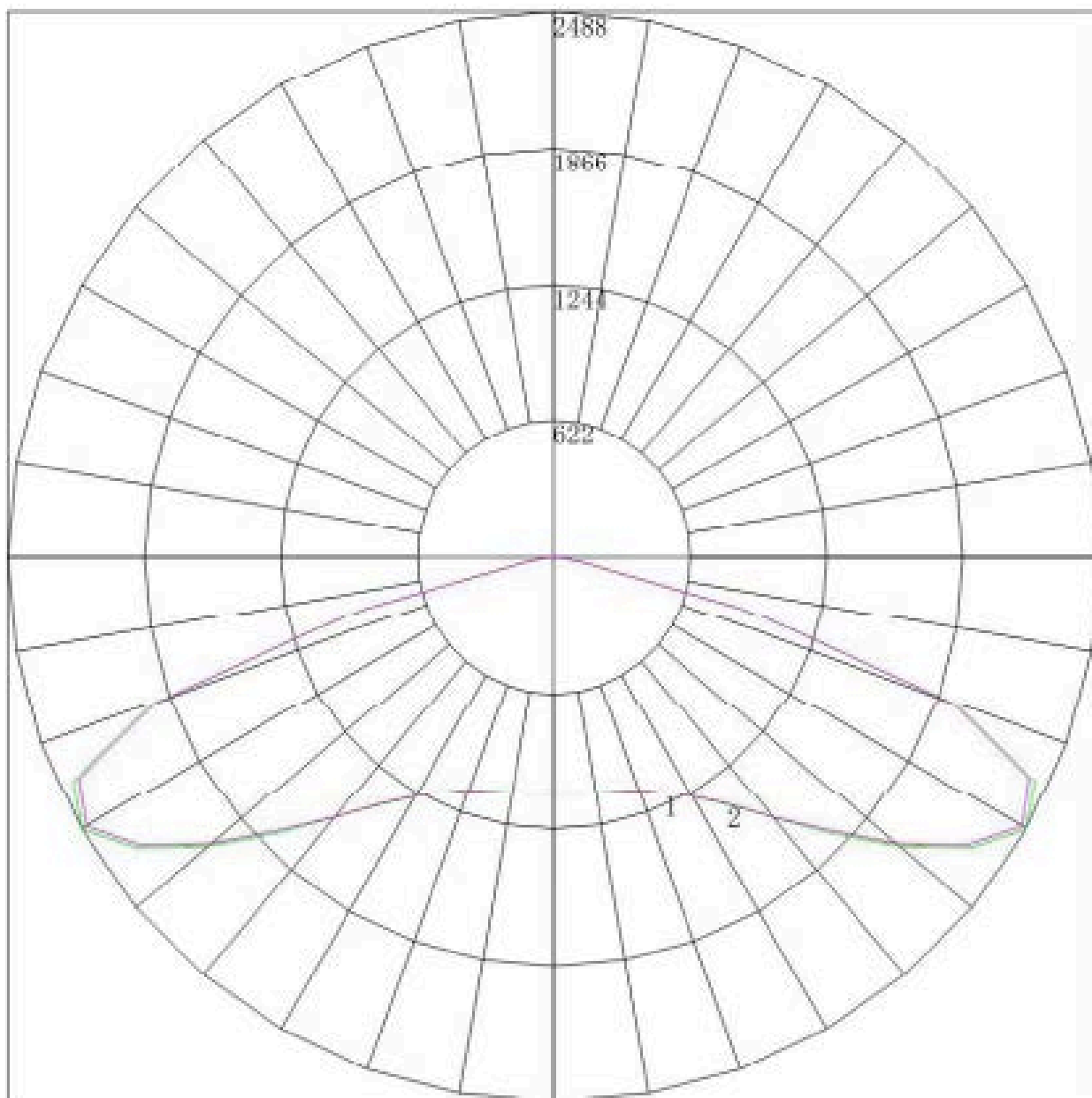


4.2 ANSI Chromaticity Quadrangles Diagram



PHOTOMETRICS:

4.5 Polar Curves



Maximum Candela = 2488.227 Located At Horizontal Angle = 0, Vertical Angle = 60
1 - Vertical Plane Through Horizontal Angles (0 - 180)
2 - Vertical Plane Through Horizontal Angles (90 - 270)

PHOTOMETRICS:

4.6 Candela Tabulation

	<u>0</u>	<u>15</u>	<u>30</u>	<u>45</u>	<u>60</u>	<u>75</u>	<u>90</u>
0	1086.295	1086.295	1086.295	1086.295	1086.295	1086.295	1086.295
5	1087.644	1086.970	1087.874	1088.322	1086.521	1085.848	1088.090
10	1093.938	1092.823	1093.953	1095.753	1094.402	1092.817	1096.180
15	1107.877	1108.129	1108.359	1110.842	1109.039	1107.653	1111.017
20	1137.552	1140.317	1136.948	1137.414	1137.863	1133.058	1136.648
25	1188.810	1190.962	1186.920	1186.278	1185.827	1184.091	1187.012
30	1268.393	1268.170	1268.180	1265.094	1265.769	1260.751	1265.698
35	1388.443	1388.593	1387.701	1384.441	1384.217	1378.999	1383.058
40	1560.650	1561.689	1562.150	1555.582	1553.556	1548.284	1556.172
45	1789.509	1787.006	1780.705	1780.089	1777.838	1771.301	1767.054
50	2053.889	2056.892	2049.695	2045.585	2049.863	2036.581	2037.728
55	2319.617	2318.002	2308.999	2317.383	2312.878	2300.062	2296.707
60	2488.227	2485.470	2476.242	2478.387	2478.614	2470.022	2463.941
65	2423.031	2421.542	2403.298	2405.432	2403.183	2393.143	2393.745
70	1936.761	1931.432	1924.075	1920.628	1926.597	1911.899	1917.825
75	881.266	886.819	867.435	866.635	888.645	907.500	899.747
80	129.312	141.445	149.003	142.630	130.450	136.267	141.688
85	35.520	36.622	39.209	37.402	38.125	40.533	37.758
90	4.226	4.119	4.232	3.851	3.467	3.394	2.968
95	2.428	2.476	2.476	2.477	2.432	2.473	2.429
100	3.147	3.129	3.106	3.085	3.063	3.035	3.059
105	3.687	3.669	3.669	3.625	3.648	3.619	3.553
110	3.822	3.827	3.804	3.806	3.783	3.732	3.688
115	3.687	3.579	3.669	3.625	3.580	3.574	3.598
120	3.507	3.466	3.421	3.445	3.445	3.440	3.418
125	3.372	3.354	3.354	3.333	3.333	3.372	3.283
130	3.012	2.994	2.949	2.995	2.995	2.967	3.013
135	2.473	2.499	2.454	2.455	2.432	2.473	2.473
140	2.698	2.701	2.678	2.680	2.680	2.698	2.653
145	2.878	2.859	2.814	2.860	2.860	2.833	2.833
150	2.968	2.994	2.971	2.972	2.927	2.945	2.968
155	3.057	3.151	3.151	3.130	3.198	3.057	3.103
160	3.642	3.601	3.624	3.603	3.558	3.597	3.552
165	3.957	4.007	4.007	4.031	4.031	4.002	4.001
170	4.316	4.299	4.277	4.324	4.301	4.294	4.271
175	4.541	4.614	4.614	4.549	4.616	4.564	4.631
180	4.789	4.789	4.789	4.789	4.789	4.789	4.789