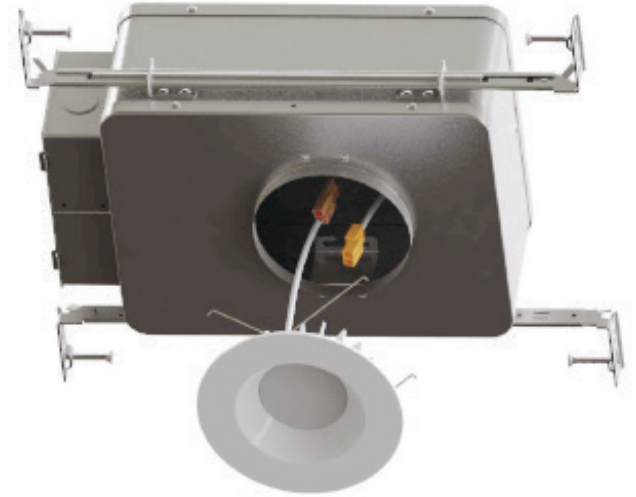


Date:	_____
Project:	_____
Price:	_____

4" Tunable Downlight

Description:

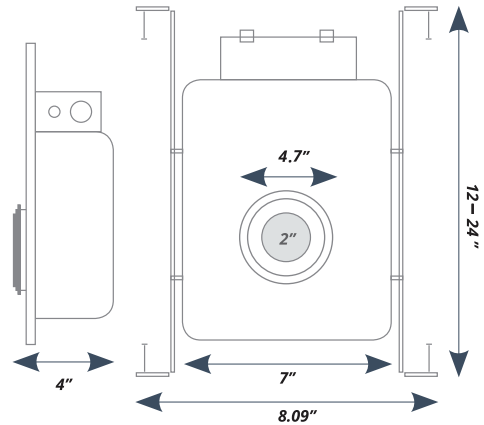
Our 4" Tunable Recessed Downlight has a new, smart design with manually adjustable color temperature options. Using a 90V-305V driver, it can be controlled by a phase dimmer or 0-10V dimmer.



Features:

- Input Voltage: 90V-305
- Power Consumption: 20W
- Lumen Output: 1,500
- Available CCT Options: 3000K, 4000K, 5500K
- Lens Finish: Frosted
- Finish: White
- Beam Angle: 100°
- Available Size: 4"
- 0-10V dimmable option available.
- Lighting controls option available.
- Damp rated
- L70 Lifetime: >50,000 hours
- 7 Year Warranty

Dimensions:



(W) 8.09" x (H) 4" x (L) 12-24"



Date: _____
 Project: _____
 Price: _____

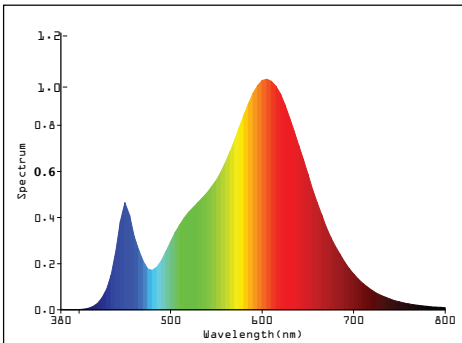
Ordering Key:

SERIES NUMBER	WATTS / SIZE / LUMENS	CCT	LENS	FINISH	OPTIONS
ILDRTDMKS	20w- 4IN/1,500	3 - 3000K	F - FROSTED	W - WHITE TRIM	DM - 0-10V DIMMING
		4 - 4000K			EM -EMERGENCY BACKUP
		5 - 5500K			

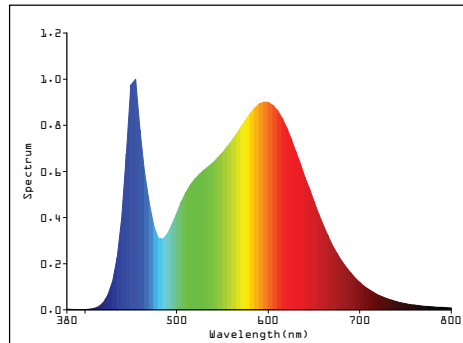
SAMPLE ITEM NUMBER: ILDRTDMKS 20 4 F W DM

Photometrics:

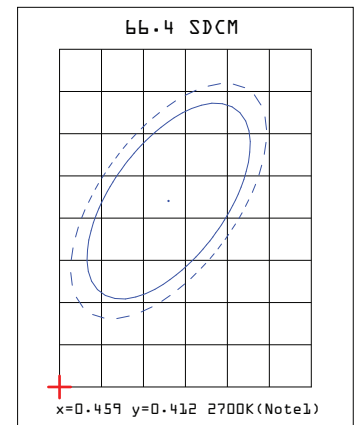
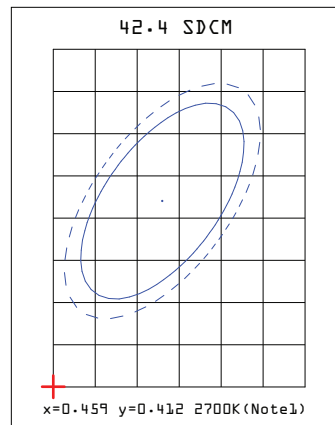
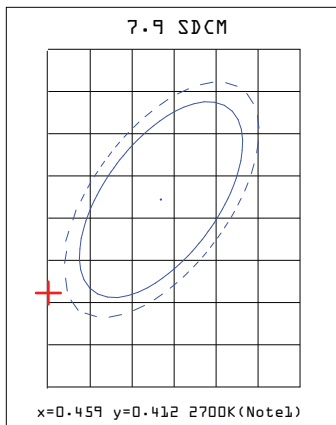
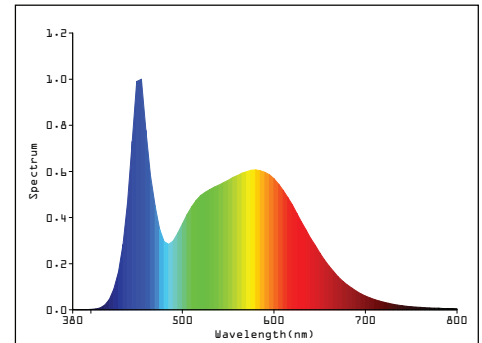
3000K:



4000K:



5500K:



Tc: 2867K
Flux: 1506.1 lm
Efficacy: 73.11 lm/W

Tc: 4007K
Flux: 1714.0 lm
Efficacy: 89.74 lm/W

Tc: 5552K
Flux: 1588.5 lm
Efficacy: 79.03 lm/W

