

TRACK

Description:

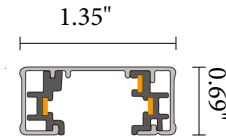
Our Track system is a low profile extruded aluminum track with 20-AMP rated flat integral conductors. 3 wire single circuit track is compatible with Halo track lighting. Available in white, black, or silver decorative lighting applications at offices, kitchens, and retail locations.

Features:

- Input Power: 120V
- Housing Material: Aluminum
- Available Finish Options: Black, White or Silver .
- Available Length Options: 4', 6', or 8'
- Operating Temperature: -4°F ~ 104°F
- L70 Lifetime: >50,000 hours
- 0-10V dimming option available.
- Lighting controls option available.
- 7 Year Warranty



Dimensions:



Accessories:



Live-end
connector



Mini Joiner



Straight
connector



End cap



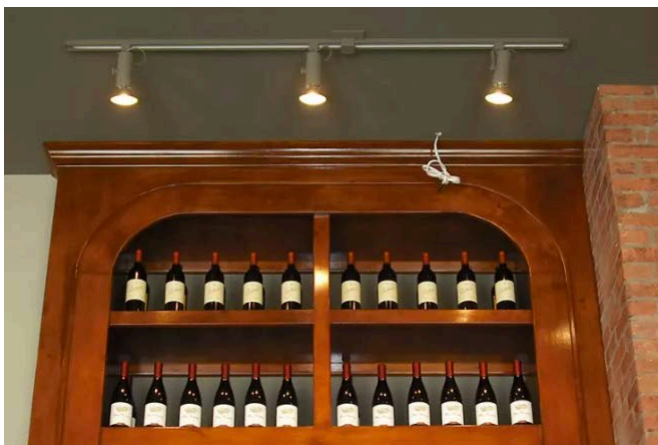
"L" connector



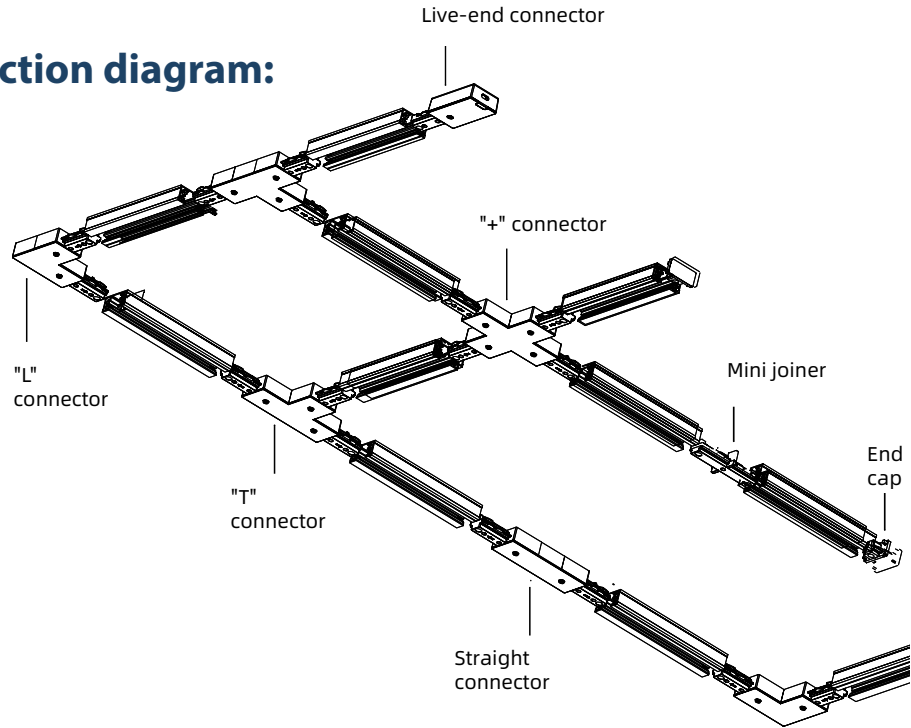
"+" connector



"T" connector



Track system connection diagram:



Ordering Key:

ILTLTWA			
SERIES NUMBER	SIZE	COLOR FINISH	ADDITIONAL OPTIONS
ILTLTKPG	4 - 4ft	W - WHITE	TD - TRIAC DIMMABLE
	6 - 6ft	B - BLACK	
	8 - 8ft	S - SILVER	

SAMPLE ITEM NUMBER: ILTLTKPG 4 W TD

Electrical Data:

- **Input Power:** Stays consistent over life.
- **Input Voltage:** 120V
- **CRI:** >90
- **Operating Temperature:** -4°F ~ 104°F
- **L70 Lifetime:** >50,000 hours.

Controls:

- This LED fixture is equipped with phase dimming that works universally with any standard phase control or dimmer.

