

LED INTEGRATED BOX FIXTURE

Description:

Our Integrated Box Fixture is a combination of your classic yet sleek fixture. With a high lumen output of 130 Lm/W and a CRI >90, this fixture achieves high levels of brightness and an even light spread, making it perfect for any application.



Features:

- Input Power: 120/277 VAC
- Power Consumption: 18W 25W, 36W, or 45W
- Lumen Output: 130Lm/W
- CRI >90
- Available Color Options: 3000K, 4000K, 5000K
 - CCT tunable 3000K-3500K-4000K
- Housing Option: White Steel
- Available Mounting Options: Surface mount
- 1-10V dimmable option available.
- Allows for 3 -step down dimming from required light level to off.
 - The low light level you would like to have after the hold time in the long absence of people. From 10%, 20% to 30%, 50%.
- Emergency backup option available.
- Motion or Daylight sensor option available.
- Rated Life: >50,000 hours
- UL listed for damp location
- 7 Year Warranty
- Dimensions (L x H x W): 23.9" x 13.6" x 3.7"

46.5" x 13.6" x 3.7"

Applications:

- Stairways
- Hallways
- Basements
- Storage Facilities
- Bathrooms
- Warehouses



Date: _____

Project: _____

Price: _____

Ordering Key:

SERIES NUMBER	WATTS/ SIZE/ LUMENS	CCT	FINISH	ADDITIONAL OPTIONS
ILBXSBL	18W - 2 FT. / 2,340	3K - 3000K	W - WHITE	DIM - 1-10V DIMMING
	25W - 4 FT. / 3,250	4K - 4000K		UDIM10 - UNOCCUPIED DIM 10%
	36W - 4 FT. / 4,680	5K - 5000K		UDIM20 - UNOCCUPIED DIM 20%
	45W - 4 FT. / 5,850	CCT - CCT TUNABLE 3000K-3500K-4000K		UDIM30 - UNOCCUPIED DIM 30%
				UDIM50 - UNOCCUPIED DIM 50%
				EM - EMERGENCY BACKUP
				MS- MOTION SENSOR

SAMPLE ITEM NUMBER: ILBXSBL 45W 5K EM MS

Electrical Data:

- **Input Power:** Stays consistent over life.
- **Input Voltage:** 120-277 VAC
- **CRI:** >90
- **L70 Lifetime:** >50,000 hours.

Controls:

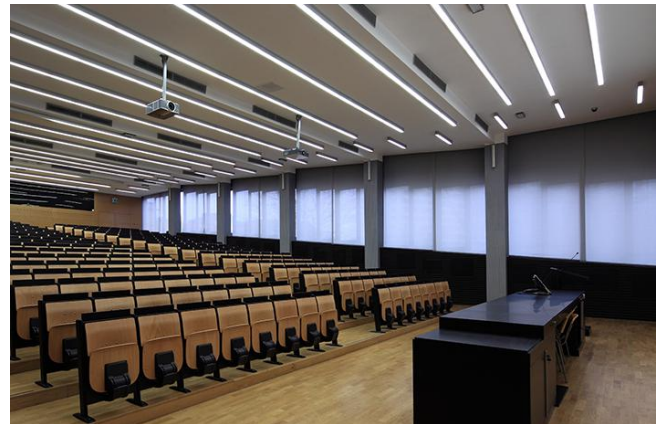
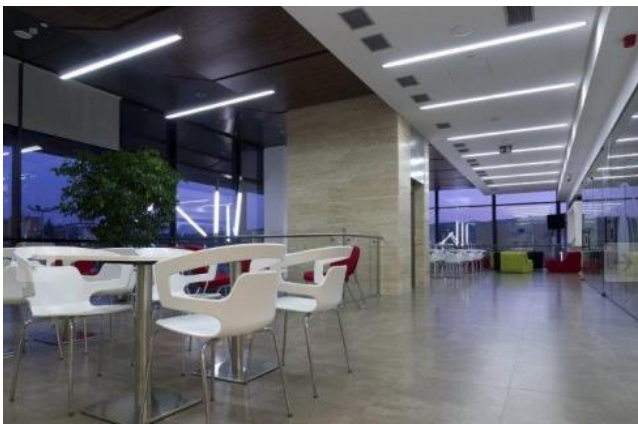
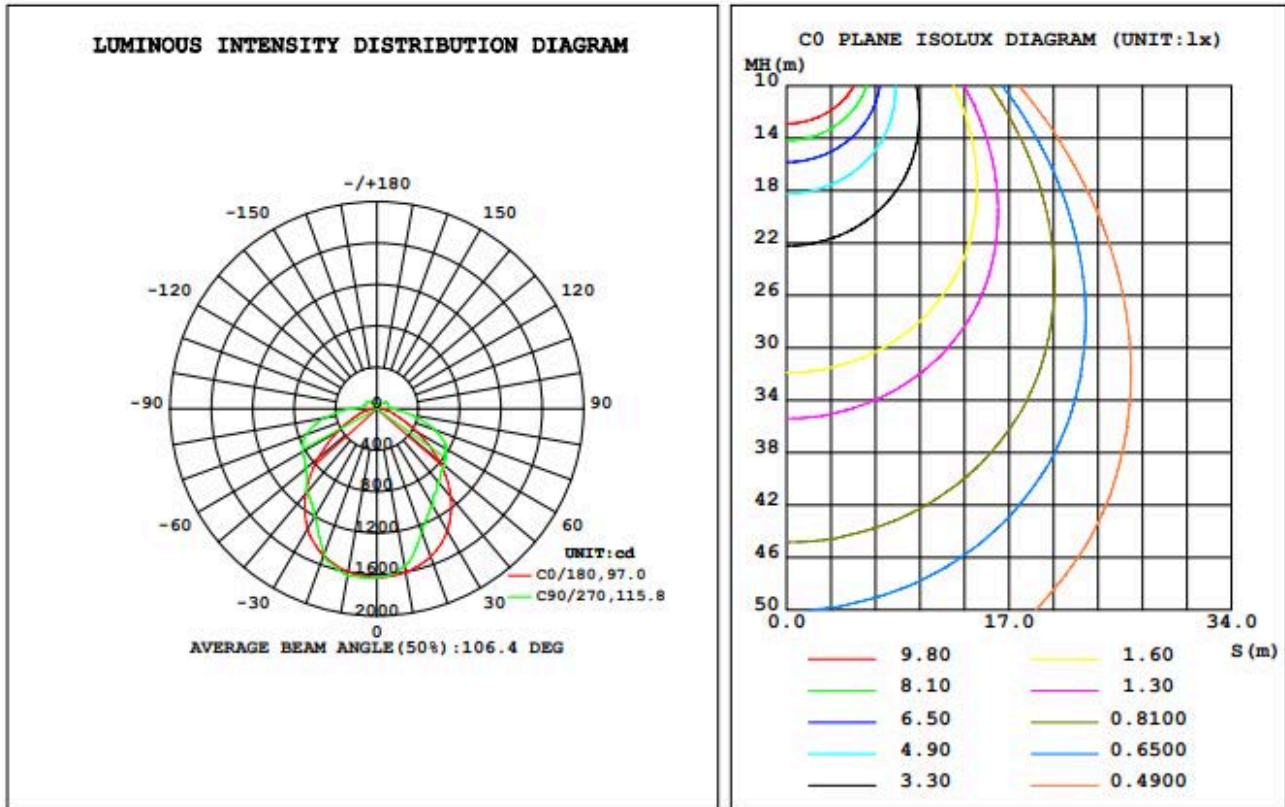
- This LED fixture is equipped with 1-10V dimming that works universally with any standard 0-10V control or dimmer.
- This fixture has an emergency backup option available in event of a power outage.
- Motion sensor option is available for this product.

Optical System:

- A unique combination of reflective & refractive optical components achieves a uniform, comfortable look while eliminating pixelation & color fringing.
- Parts work in unison to optimize light distribution, balancing the high delivery of high illuminance levels on horizontal surfaces with an ideal amount of light on walls and vertical surfaces, increasing perception of spaciousness.



Photometrics:



North America Version / Dimming Function



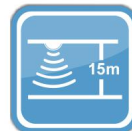
Max.8M



Light Sensor



Hold Time
10s~30min



Mounting Height
15 m Max.



Cluster-control
Version

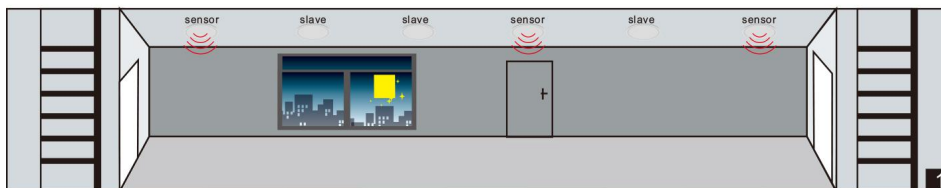


Automatic
Dimming

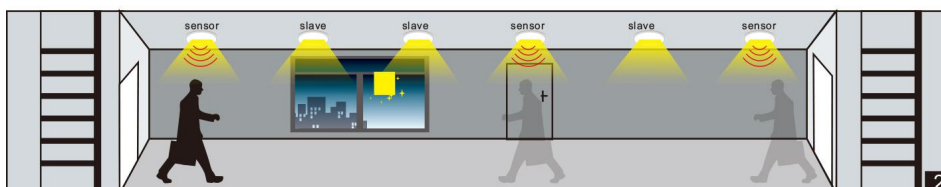
3-Step Dimming Function / ON-OFF Function / Day Light Harvesting

3-step dimming function

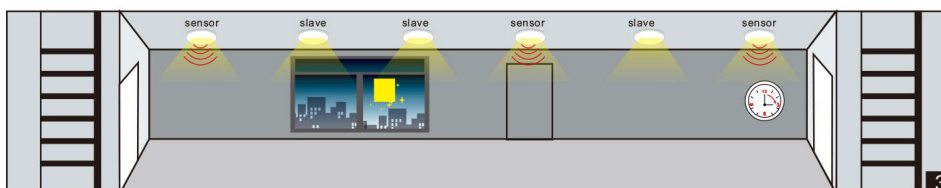
Lamps in corridor are controlled by several sensors. Once any motion is detected by one of sensors, the motion signal will be transmitted to other sensors connected together. Then, all lamps switch on at the same time, instead of switching on the lamps in the area where motion is detected.



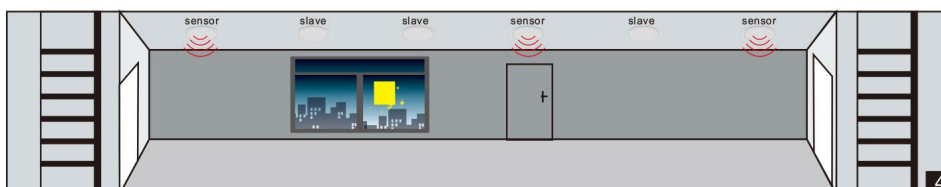
- 1 No motion detected, all lamps switch off.



- 2 Any movement is detected from any direction, all lamps synchronously switch on.



- 3 No motion is detected in detection area, all lamps synchronously dim to a low light level after hold time.



- 4 After stand-by period, the lamps switch off if no movement is detected in the detection zone.

ON-OFF Function

MC601V is an innovative motion sensor, switch on the light on detection of movement, and switch off after a hold time when there is no motion detected. As built-in daylight sensor can read brightness value, the sensor does not switch on the light if with sufficient natural light.



With sufficient light, the lamp doesn't switch on.



With insufficient ambient light, the sensor switches on the lamp when motion is detected.

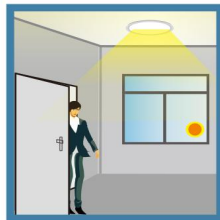


After hold time, the sensor switches off the lamp when no motion is detected.

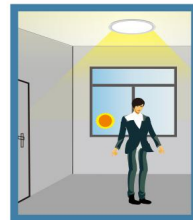
Day light Sensor



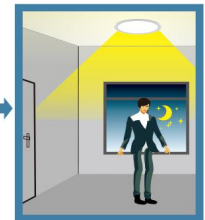
Ambient light larger than preset illumination level (Set by 1-10V daylight sensor), the lamp keeps off.



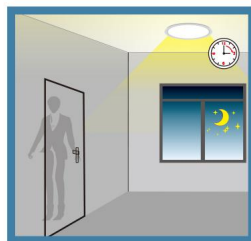
Ambient light below than preset illumination level, the lamp switches on when motion is detected.



The lamp lights on 100% illumination or dims to maintain the preset illumination level against the level of ambient light.



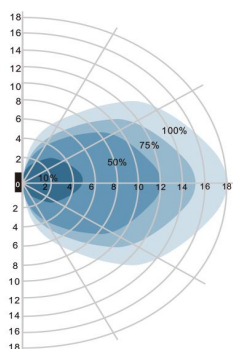
If with sufficient ambient light, the lamp turns off at once, even with motion trigger.



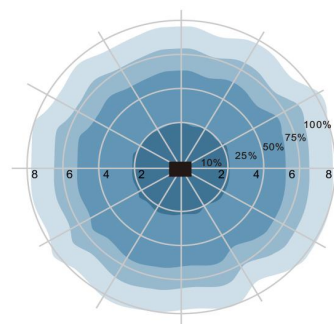
If with insufficient ambient light, the lamp dims to stand-by dimming level (Set in the motion sensor) when no motion detected after hold time, and then switches off after stand-by period.



Detection Pattern



Wall mounting pattern (Unit: m)
Suggested installation height: 1-1.8m



Ceiling mounting pattern (Unit: m)
Suggested installation height: 2.5-10m

Setting

By selecting the combination on the DIP switches, sensor data can be precisely set for each specific application.

	1	2	
ON	I	ON ON	100%
	II	ON -	75%
	III	- ON	50%
	IV	- -	10%

	3	4	5	
ON	I	ON ON ON		5S
	II	- ON ON		30S
	III	ON - ON		90S
	IV	- - ON		3min
	V	ON ON -		20min
	VI	- - -		+∞

	6	7	8	
ON	I	ON ON ON		0S
	II	- ON ON		5S
	III	ON - ON		5min
	IV	- - ON		10min
	V	ON ON -		30min
	VI	- ON -		1h
	VII	- - -		+∞

	1	2	3	4	
ON	I	- - ON ON			2Lux
	II	- - - ON			5Lux
	III	- ON ON -			10Lux
	IV	- - ON -			25Lux
	V	- ON - -			50Lux
	VI	ON - - -			100Lux
	VII	- - - -			Disable

	5	6	
ON	I	ON ON	50%
	II	- ON	30%
	III	ON -	20%
	IV	- -	10%

Detection area

Detection area can be reduced by selecting the combination on the DIP switches to fit precisely each application .

Hold time

Refers to the time period the lamp remains at 100% illumination after no motion detected.

Stand-by period

Refers to the time period the lamp remains at a low light level before it completely switches off in the long absence of people.

When set to "+∞" mode, the low light is maintained until motion is detected.

Daylight sensor

The sensor can be set to only allow the lamp to illuminate below a defined ambient brightness threshold.

When set to Disable mode, the daylight sensor will switch on the lamp when motion is detected regardless of ambient light level.

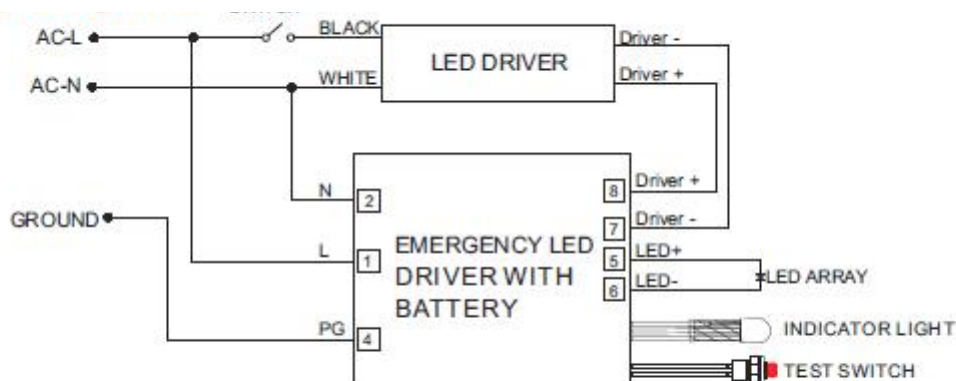
50lux, 30lux: twilight operation, 10lux, 5lux: darkness operation only.

Note that daylight sensor is active only when lamp totally switches off.

Stand-by dimming level

The low light level you would like to have after the hold time in the long absence of people.

Wiring Diagram:



- 1.DO NOT MATE CONNECTOR UNTIL INSTALLATION IS COMPLETE AND AC POWER IS SUPPLIED.
- 2.TEST ACCESSORY LEADS-OBSERVE PROPER POLARITY WIRING.