

Date:	_____
Project:	_____
Price:	_____

LED INDIRECT LINEAR FIXTURE

Single run up-and-down lighting

Description:

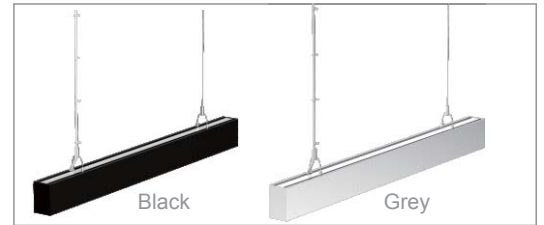
Our LED Indirect Linear Fixture has a PC diffuser, high efficiency and uniform light distribution. It provides up-and-down, indirect lighting and has multiple ways of installation: wall mounted or suspended. The Indirect Linear Fixture is perfect for offices, conference rooms, retail, school, lobbies, and hospitals.

Features:

- Easy to install.
- Screwless end cap.
- 0-10V dimmable.
- Multiple mounting options: suspended or wall mounted.
- Available in white, black, or grey.
- Aluminum body with a PC diffuser.
- L₇₀ Lifetime: >50,000 hours
- 7 Year Warranty
- Lighting control options available
- Available in 3000K, 4000K & 5000k
- CRI>90
- Beam Angle 110
- IP40
- Dimensions: 47.52" x 4.33" x 2.76" / 8.2 lbs
94.76" x 4.33" x 2.76" / 15.1 lbs



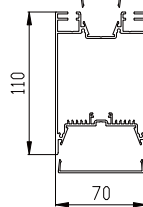
Finish Options:



1. Screwless end cap.



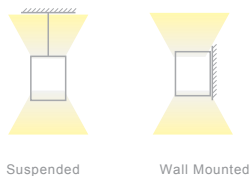
2. Extrusion lamp body & PC diffuser.



3. Smooth & soft lighting effect; no shadows.



4. Mounting options available:



5. Finish options available.



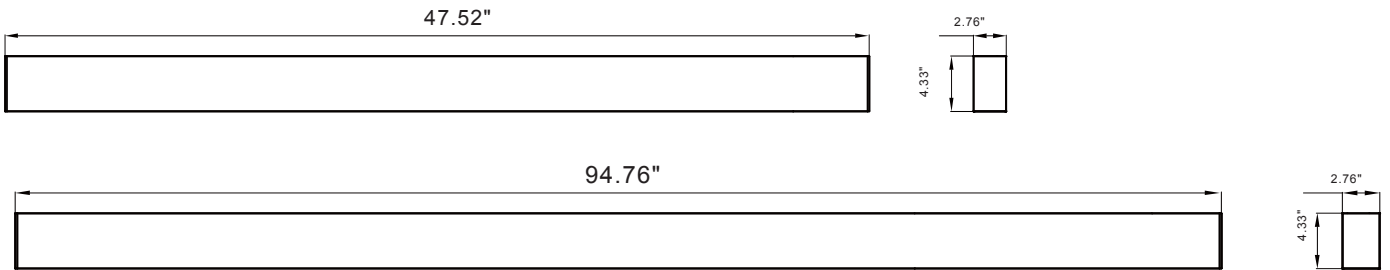
Date:	_____
Project:	_____
Price:	_____

Applications:

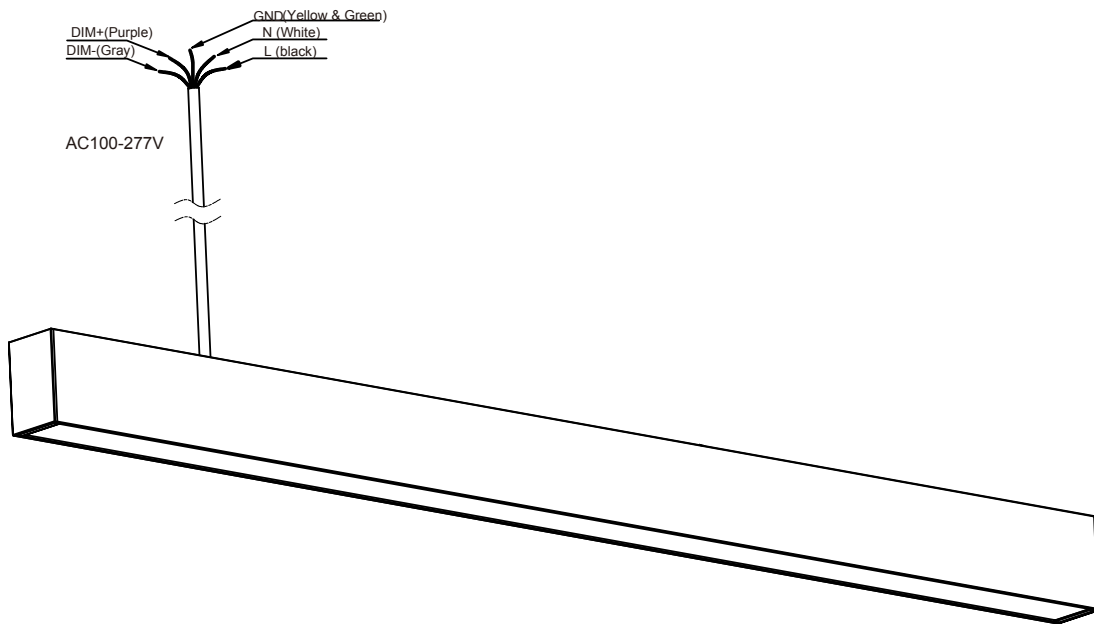
- Offices
- Conference Rooms
- Schools
- Hospitals
- Libraries
- Hotels



Dimensions (Unit: mm/inch)



Electrical Connection



Date:	_____
Project:	_____
Price:	_____

Ordering Key:

SERIES NUMBER	WATTS/ SIZE/ LUMENS	CCT	FINISH	ADDITIONAL OPTIONS
ILLIDSC	4 FT - 56W / 4,400	3K - 3000K	B - BLACK	DIM - 1-10V DIMMING
	8 FT - 75W/ 6,594	4K - 4000K	WH - WHITE	
		5K - 5000K	G - GREY	

SAMPLE ITEM NUMBER: ILLIDSC 8FT 4K B DIM

Electrical Data:

- **Input Power:** Stays consistent over life.
- **Input Voltage:** 100-277 VAC
- **Operating Temperature:** -4°F ~ 104°F
- **CRI:** >90
- **L70 Lifetime:** >50,000 hours.

Controls:

- This LED fixture is equipped with 0-10V dimming that works universally with any standard 0-10V control or dimmer.

Optical System:

- A unique combination of reflective & refractive optical components achieves a uniform, comfortable look while eliminating pixelation & color fringing.
- Parts work in unison to optimize light distribution, balancing the high delivery of high illuminance levels on horizontal surfaces with an ideal amount of light on walls and vertical surfaces, increasing perception of spaciousness.



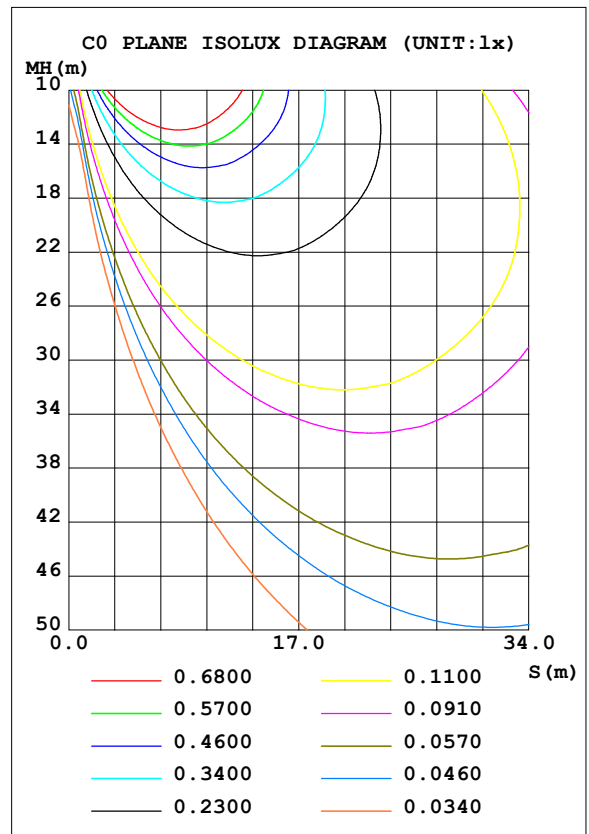
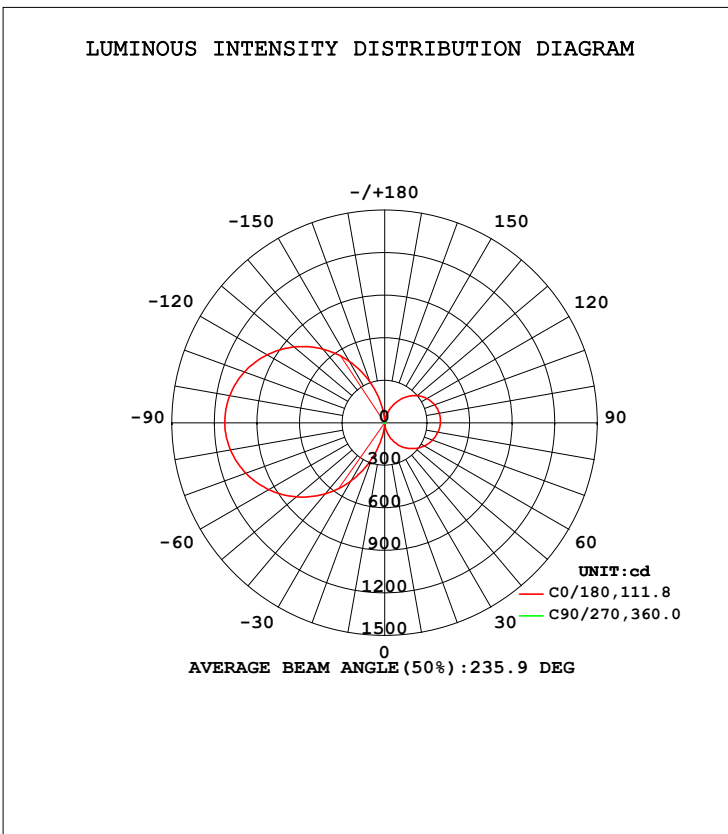


i-LUMINOSITY
LED LIGHTING FIXTURES

Date:	_____
Project:	_____
Price:	_____

Photometrics:

DATA OF LAMP		PHOTOMETRIC DATA				Eff: 84.60 lm/W
MODEL	SMD 2835 /LED	I _{max} (cd)	1128	S/MH (C0/180)		14.42
NOMINAL POWER (W)	50.7	LOR (%)	100.0	S/MH (C90/270)		1.85
RATED VOLTAGE (V)	220	TOTAL FLUX (lm)	4289.2	η UP, DN (C0-180)		21.9, 22.6
NOMINAL FLUX (lm)	4289.17	CIE CLASS	DIFFUSE	η UP, DN (C180-360)		27.7, 27.8
LAMPS INSIDE	1	η up (%)	49.6	CIBSE SHR NOM		0.75
TEST VOLTAGE (V)	220.2	η down (%)	50.4	CIBSE SHR MAX		0.95



**Additional photometrics available on website.

