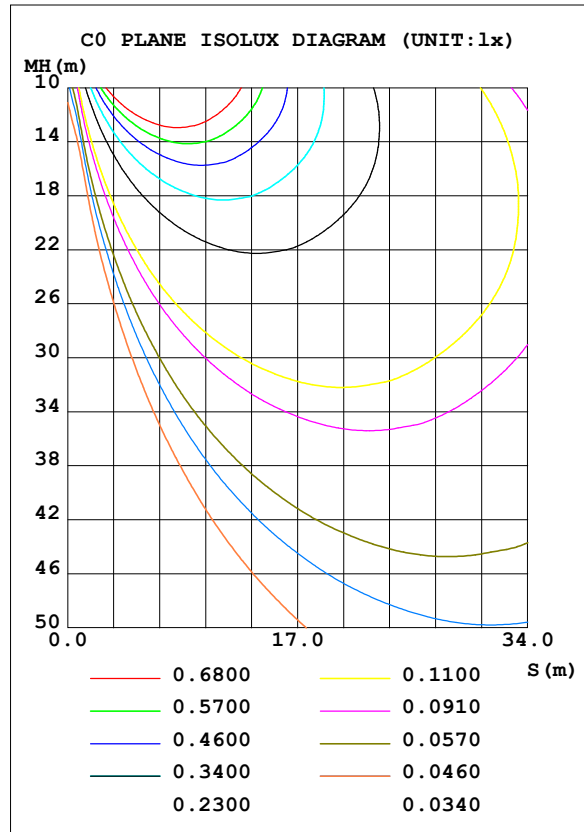
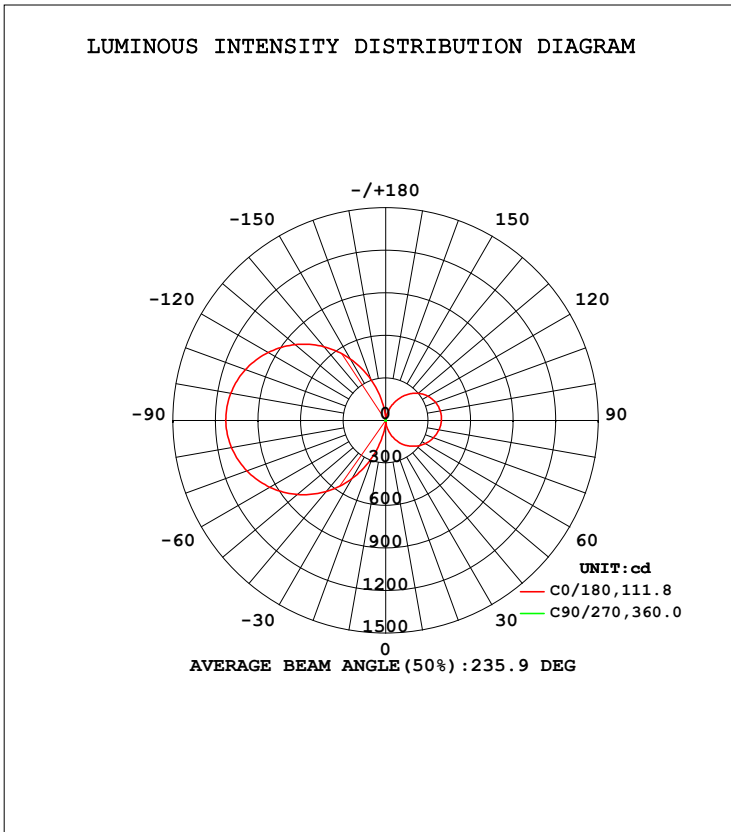


# LUMINAIRE PHOTOMETRIC TEST REPORT

Test:U:220.2V I:0.2380A P:50.70W PF:0.9670 Freq:50.00Hz Lamp Flux:4289.17x1 lm		
NAME: SC-SL11070-050-AW-A02-01WW	TYPE:Linear Light	WEIGHT:Kg
SPEC.:50W	DIM.: 1207*70*110 (MM)	SERIAL No.:01
MFR.: Signcomplex	SUR.:1200*70 (MM)	Shielding Angle:120

DATA OF LAMP		PHOTOMETRIC DATA			
MODEL	SMD 2835 /LED	Imax (cd)	1128	S/MH (C0/180)	14.42
NOMINAL POWER (W)	50.7	LOR (%)	100.0	S/MH (C90/270)	1.85
RATED VOLTAGE (V)	220	TOTAL FLUX (lm)	4289.2	$\eta$ UP, DN (C0-180)	21.9, 22.6
NOMINAL FLUX (lm)	4289.17	CIE CLASS	DIFFUSE	$\eta$ UP, DN (C180-360)	27.7, 27.8
LAMPS INSIDE	1	$\eta$ up (%)	49.6	CIBSE SHR NOM	0.75
TEST VOLTAGE (V)	220.2	$\eta$ down (%)	50.4	CIBSE SHR MAX	0.95



C Range: 0 - 360DEG  
 C Interval: 22.5DEG  
 Test Speed: HIGH  
 Temperature: 25.3DEG  
 Operators: MO FU MEI  
 Test Date: 2017-06-19

$\gamma$  Range: 0 - 180DEG  
 $\gamma$  Interval: 1.0DEG  
 Test System: EVERFINE GO-2000B\_V1 SYSTEM V2.0.361  
 Humidity: 65.0%  
 Test Distance: 7.000m [K=1.0000]  
 Remarks:



Date:	_____
Project:	_____
Price:	_____

## ZONAL FLUX DIAGRAM

$\gamma$	C0	C45	C90	C135	C180	C225	C270	C315	$\gamma$	$\Phi$ zone	$\Phi$ total	%lum, lamp	
10	37.74	21.29	4.628	68.15	86.02	49.38	4.901	12.83	0- 10	1.926	1.926	0.04,0.04	
20	105.3	64.38	4.691	186.4	272.3	164.0	5.205	51.55	10- 20	20.81	22.74	0.53,0.53	
30	174.2	112.9	4.726	318.1	470.9	298.6	5.607	100.6	20- 30	69.20	91.93	2.14,2.14	
40	232.2	157.4	4.733	442.0	654.1	428.8	5.834	149.7	30- 40	142.9	234.8	5.47,5.47	
50	282.4	198.0	4.656	549.9	813.0	543.7	6.030	193.6	40- 50	231.2	466.0	10.9,10.9	
60	325.7	232.0	4.631	637.9	943.2	639.0	6.162	229.9	50- 60	322.6	788.6	18.4,18.4	
70	359.4	256.7	4.642	703.2	1042	711.9	6.200	258.3	60- 70	405.0	1194	27.8,27.8	
80	381.9	270.2	4.628	743.4	1104	759.2	6.323	277.1	70- 80	467.7	1661	38.7,38.7	
90	393.2	273.1	4.558	755.0	1128	777.2	5.729	282.9	80- 90	501.9	2163	50.4,50.4	
100	391.9	262.3	4.778	735.3	1109	763.0	5.777	273.1	90-100	501.6	2665	62.1,62.1	
110	375.0	243.5	4.795	687.5	1052	720.7	3.586	241.2	100-110	465.3	3130	73,73	
120	344.5	188.3	4.858	615.1	959.1	652.8	3.320	185.9	110-120	399.2	3529	82.3,82.3	
130	299.8	144.1	4.817	521.4	833.3	561.5	3.034	148.7	120-130	314.2	3843	89.6,89.6	
140	240.4	103.5	5.179	408.9	679.3	450.1	3.343	111.1	130-140	222.2	4066	94.8,94.8	
150	170.8	66.79	5.051	282.1	502.3	323.2	5.033	73.49	140-150	135.6	4201	97.9,97.9	
160	98.86	39.82	4.873	150.9	306.8	185.8	4.781	48.60	150-160	65.80	4267	99.5,99.5	
170	30.95	13.97	4.684	42.42	113.2	64.98	4.488	19.79	160-170	20.19	4287	100,100	
180	6.075	4.320	4.638	4.450	6.043	4.362	4.296	4.537	170-180	1.947	4289	100,100	
DEG	LUMINOUS INTENSITY:cd									UNIT:lm			

Conical surface Flux(90deg): 338.9 lm

%lum = 7.9%  
%lamp = 7.9%

Conical surface Flux(120deg): 788.59 lm

%lum = 18.4%  
%lamp = 18.4%

C Range: 0 - 360DEG  
C Interval: 22.5DEG  
Test Speed: HIGH  
Temperature:25.3DEG  
Operators:MO FU MEI  
Test Date:2017-06-19

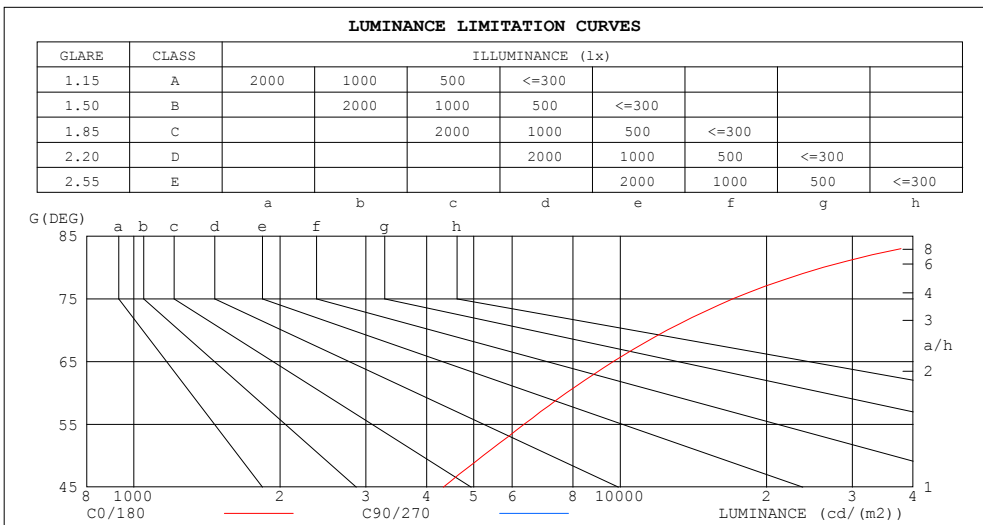
$\gamma$  Range: 0 - 180DEG  
 $\gamma$  Interval: 1.0DEG  
Test System:EVERFINE GO-2000B\_V1 SYSTEM V2.0.361  
Humidity:65.0%  
Test Distance:7.000m [K=1.0000]  
Remarks:



Date:	_____
Project:	_____
Price:	_____

# LUMINANCE LIMITATION CURVES

Test:U:220.2V I:0.2380A P:50.70W PF:0.9670 Freq:50.00Hz Lamp Flux:4289.17x1 lm		
NAME: SC-SL11070-050-AW-A02-01WW	TYPE:Linear Light	WEIGHT:Kg
SPEC.:50W	DIM.: 1207*70*110 (MM)	SERIAL No.:01
MFR.: Signcomplex	SUR.:1200*70 (MM)	Shielding Angle:120



LUMINANCE cd/(m2)		
G (DEG)	C0/180	C90/270
85	53224	629
80	26179	317
75	17087	210
70	12510	162
65	9691	132
60	7755	110
55	6348	96
50	5231	86
45	4329	79

C Range: 0 - 360DEG  
 C Interval: 22.5DEG  
 Test Speed: HIGH  
 Temperature:25.3DEG  
 Operators:MO FU MEI  
 Test Date:2017-06-19

$\gamma$  Range: 0 - 180DEG  
 $\gamma$  Interval: 1.0DEG  
 Test System:EVERFINE GO-2000B\_V1 SYSTEM V2.0.361  
 Humidity:65.0%  
 Test Distance:7.000m [K=1.0000]  
 Remarks:

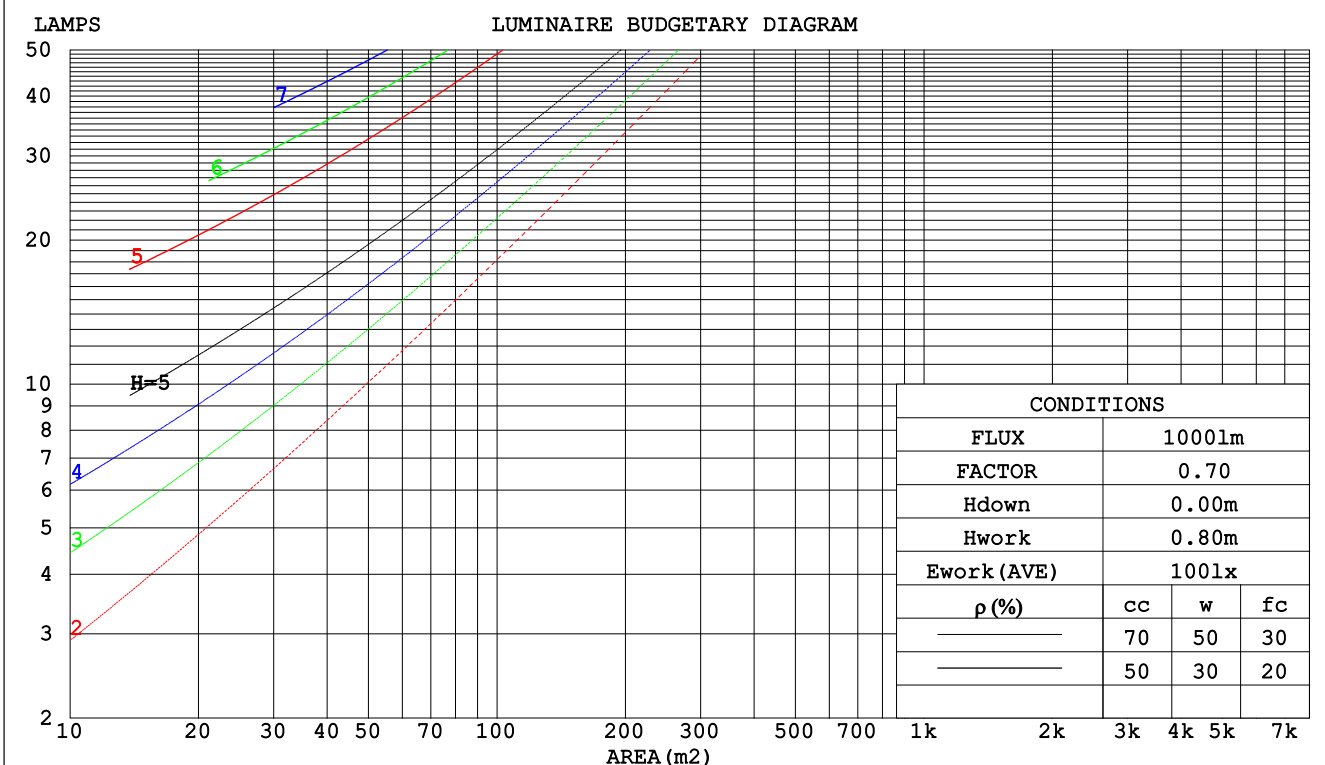


Date:	_____
Project:	_____
Price:	_____

# CU AND LUMINAIRE BUDGETARY ESTIMATE DIAGRAM

Test:U:220.2V I:0.2380A P:50.70W PF:0.9670 Freq:50.00Hz Lamp Flux:4289.17x1 lm		
NAME: SC-SL11070-050-AW-A02-01WW	TYPE:Linear Light	WEIGHT:Kg
SPEC.:50W	DIM.: 1207*70*110 (MM)	SERIAL No.:01
MFR.: Signcomplex	SUR.:1200*70 (MM)	Shielding Angle:120

ρcc	80%			70%			50%			30%			10%			0			
	ρw	ρfc	RCR	ρw	ρfc	RCR	ρw	ρfc	RCR	ρw	ρfc	RCR	ρw	ρfc	RCR	ρw	ρfc	RCR	
	50%	20%	RCR:Room Cavity Ratio	50%	20%	RCR	50%	20%	RCR	50%	20%	RCR	50%	20%	RCR	50%	20%	RCR	
	Coefficients of Utilization (CU)																		
0.0	1.07	1.07	1.07	.99	.99	.99	.84	.84	.84	.69	.69	.69	.57	.57	.57	.50			
1.0	.85	.79	.73	.78	.72	.67	.64	.60	.56	.52	.49	.46	.40	.38	.36	.30			
2.0	.71	.62	.55	.65	.57	.50	.53	.47	.42	.42	.37	.33	.32	.29	.26	.20			
3.0	.60	.51	.43	.55	.46	.39	.45	.38	.32	.35	.30	.26	.27	.23	.19	.15			
4.0	.52	.42	.35	.47	.39	.32	.39	.32	.26	.30	.25	.20	.23	.18	.15	.11			
5.0	.46	.36	.29	.41	.33	.26	.34	.27	.21	.26	.21	.17	.20	.15	.12	.08			
6.0	.40	.31	.24	.37	.28	.22	.30	.23	.18	.23	.18	.14	.17	.13	.10	.07			
7.0	.36	.27	.20	.33	.24	.19	.27	.20	.15	.21	.16	.12	.16	.11	.08	.05			
8.0	.32	.23	.17	.29	.21	.16	.24	.18	.13	.19	.14	.10	.14	.10	.07	.04			
9.0	.29	.21	.15	.27	.19	.14	.22	.16	.11	.17	.12	.09	.13	.09	.06	.04			
10.0	.27	.19	.13	.24	.17	.12	.20	.14	.10	.16	.11	.07	.12	.08	.05	.03			



C Range: 0 - 360DEG  
 C Interval: 22.5DEG  
 Test Speed: HIGH  
 Temperature:25.3DEG  
 Operators:MO FU MEI  
 Test Date:2017-06-19

γ Range: 0 - 180DEG  
 γ Interval: 1.0DEG  
 Test System:EVERFINE GO-2000B\_V1 SYSTEM V2.0.361  
 Humidity:65.0%  
 Test Distance:7.000m [K=1.0000]  
 Remarks:



Date:	_____
Project:	_____
Price:	_____

## WEC AND CCEC

Test:U:220.2V I:0.2380A P:50.70W PF:0.9670 Freq:50.00Hz Lamp Flux:4289.17x1 lm		
NAME: SC-SL11070-050-AW-A02-01WW	TYPE:Linear Light	WEIGHT:Kg
SPEC.:50W	DIM.: 1207*70*110 (MM)	SERIAL No.:01
MFR.: Signcomplex	SUR.:1200*70 (MM)	Shielding Angle:120

pcc	80%			70%			50%			30%			10%			0
pw	50%	30%	10%	50%	30%	10%	50%	30%	10%	50%	30%	10%	50%	30%	10%	0
pfc	20%			20%			20%			20%			20%			0
RCR	RCR:Room Cavity Ratio						Wall Exitance Coefficients(WEC)									
0.0																
1.0	.445	.253	.080	.423	.241	.077	.381	.219	.070	.342	.197	.063	.307	.178	.057	
2.0	.365	.200	.061	.345	.190	.059	.306	.170	.053	.271	.152	.048	.238	.135	.042	
3.0	.315	.168	.050	.297	.159	.048	.261	.142	.043	.229	.125	.038	.199	.110	.034	
4.0	.278	.145	.043	.261	.137	.040	.229	.121	.036	.199	.107	.032	.171	.093	.028	
5.0	.250	.127	.037	.234	.120	.035	.204	.106	.031	.177	.093	.028	.151	.081	.024	
6.0	.226	.114	.033	.212	.107	.031	.185	.095	.028	.159	.083	.024	.135	.071	.021	
7.0	.207	.102	.029	.194	.097	.028	.169	.085	.025	.145	.074	.022	.123	.064	.019	
8.0	.191	.093	.026	.179	.088	.025	.155	.078	.022	.133	.067	.019	.112	.058	.017	
9.0	.177	.086	.024	.166	.081	.023	.144	.071	.020	.123	.062	.018	.104	.053	.015	
10.0	.165	.079	.022	.154	.075	.021	.134	.066	.018	.115	.057	.016	.096	.048	.014	

pcc	80%			70%			50%			30%			10%			0
pw	50%	30%	10%	50%	30%	10%	50%	30%	10%	50%	30%	10%	50%	30%	10%	0
pfc	20%			20%			20%			20%			20%			0
RCR	RCR:Room Cavity Ratio						Ceiling Cavity Exitance Coefficients(CCEC)									
0.0	.568	.568	.568	.486	.486	.486	.331	.331	.331	.190	.190	.190	.061	.061	.061	
1.0	.570	.536	.504	.488	.460	.434	.334	.316	.300	.192	.183	.175	.062	.059	.056	
2.0	.565	.515	.472	.484	.443	.408	.332	.307	.285	.191	.178	.167	.061	.058	.054	
3.0	.559	.500	.453	.479	.431	.393	.329	.300	.276	.190	.175	.162	.061	.057	.053	
4.0	.551	.489	.441	.473	.422	.383	.325	.294	.270	.188	.172	.160	.061	.056	.052	
5.0	.544	.480	.433	.467	.415	.376	.322	.290	.266	.186	.170	.158	.060	.056	.052	
6.0	.536	.473	.427	.461	.409	.372	.318	.286	.263	.184	.169	.156	.060	.055	.052	
7.0	.529	.467	.423	.455	.404	.368	.314	.284	.261	.183	.167	.155	.059	.055	.051	
8.0	.522	.461	.419	.450	.400	.366	.311	.281	.259	.181	.166	.155	.059	.054	.051	
9.0	.516	.457	.417	.445	.397	.364	.308	.279	.258	.179	.165	.154	.058	.054	.051	
10.0	.510	.453	.415	.440	.393	.362	.305	.277	.257	.178	.164	.153	.058	.054	.051	

C Range: 0 - 360DEG  
 C Interval: 22.5DEG  
 Test Speed: HIGH  
 Temperature:25.3DEG  
 Operators:MO FU MEI  
 Test Date:2017-06-19

γ Range: 0 - 180DEG  
 γ Interval: 1.0DEG  
 Test System:EVERFINE GO-2000B\_V1 SYSTEM V2.0.361  
 Humidity:65.0%  
 Test Distance:7.000m [K=1.0000]  
 Remarks:



Date:	_____
Project:	_____
Price:	_____

## UGR(Unified Glare Rating) Table

Test:U:220.2V I:0.2380A P:50.70W PF:0.9670 Freq:50.00Hz Lamp Flux:4289.17x1 lm		
NAME: SC-SL11070-050-AW-A02-01WW	TYPE:Linear Light	WEIGHT:Kg
SPEC.:50W	DIM.: 1207*70*110 (MM)	SERIAL No.:01
MFR.: Signcomplex	SUR.:1200*70 (MM)	Shielding Angle:120

ceiling/cavity	0.7	0.7	0.5	0.5	0.3	0.7	0.7	0.5	0.5	0.3
walls	0.5	0.3	0.5	0.3	0.3	0.5	0.3	0.5	0.3	0.3
working plane	0.2	0.2	0.2	0.2	0.2	0.2	0.2	0.2	0.2	0.2
Room dimensions	Viewed crosswise					Viewed endwise				
x = 2H y = 2H	10.4	11.6	11.3	12.5	13.6	2.6	3.8	3.5	4.7	5.8
3H	14.3	15.3	15.2	16.2	17.4	4.4	5.4	5.2	6.3	7.5
4H	16.4	17.3	17.3	18.3	19.5	5.2	6.1	6.1	7.1	8.3
6H	18.6	19.6	19.6	20.5	21.7	5.9	6.8	6.8	7.7	9.0
8H	19.9	20.8	20.8	21.7	23.0	6.1	7.0	7.1	8.0	9.2
12H	21.3	22.2	22.2	23.1	24.4	6.4	7.2	7.3	8.2	9.4
4H 2H	11.0	11.9	11.9	12.9	14.1	6.9	7.9	7.8	8.8	10.1
3H	15.1	16.0	16.0	16.9	18.2	9.0	9.9	9.9	10.8	12.1
4H	17.4	18.2	18.4	19.2	20.4	10.0	10.8	10.9	11.8	13.0
6H	19.9	20.6	20.9	21.6	22.9	10.9	11.6	11.8	12.6	13.9
8H	21.3	21.9	22.2	22.9	24.2	11.2	11.9	12.2	12.9	14.2
12H	22.8	23.4	23.8	24.4	25.7	11.5	12.1	12.5	13.1	14.5
8H 4H	17.8	18.4	18.7	19.4	20.7	13.0	13.7	14.0	14.7	16.0
6H	20.6	21.2	21.6	22.2	23.5	14.5	15.0	15.5	16.0	17.4
8H	22.2	22.7	23.2	23.8	25.1	15.1	15.6	16.1	16.6	18.0
12H	24.0	24.5	25.1	25.5	26.9	15.7	16.1	16.7	17.1	18.5
12H 4H	17.8	18.4	18.8	19.4	20.7	14.0	14.6	14.9	15.6	16.9
6H	20.8	21.3	21.8	22.3	23.6	15.8	16.3	16.8	17.3	18.7
8H	22.5	22.9	23.5	24.0	25.3	16.7	17.2	17.7	18.2	19.6
Variations with the observer position at spacings:										
S = 1.0H	+ 0.1 / - 0.1					+ 0.1 / - 0.1				
1.5H	+ 0.2 / - 0.3					+ 0.1 / - 0.2				
2.0H	+ 0.3 / - 0.4					+ 0.3 / - 0.3				

CIE Pub.117, 4289 lm Total Lamp Luminous Flux Correct (8log(F/F0) = 5.1)

C Range: 0 - 360DEG  
 C Interval: 22.5DEG  
 Test Speed: HIGH  
 Temperature:25.3DEG  
 Operators:MO FU MEI  
 Test Date:2017-06-19

γ Range: 0 - 180DEG  
 γ Interval: 1.0DEG  
 Test System:EVERFINE GO-2000B\_V1 SYSTEM V2.0.361  
 Humidity:65.0%  
 Test Distance:7.000m [K=1.0000]  
 Remarks:



Date:	_____
Project:	_____
Price:	_____

## UTILIZATION FACTORS TABLE

Test:U:220.2V I:0.2380A P:50.70W PF:0.9670 Freq:50.00Hz Lamp Flux:4289.17x1 lm		
NAME: SC-SL11070-050-AW-A02-01WW	TYPE:Linear Light	WEIGHT:Kg
SPEC.:50W	DIM.: 1207*70*110 (MM)	SERIAL No.:01
MFR.: Signcomplex	SUR.:1200*70 (MM)	Shielding Angle:120

REFLECTANCE										
Ceiling	0.8	0.8	0.8	0.7	0.7	0.7	0.5	0.5	0.5	0
Walls	0.7	0.5	0.3	0.7	0.5	0.3	0.7	0.5	0.3	0
Working plane	0.2	0.2	0.2	0.2	0.2	0.2	0.2	0.2	0.2	0
ROOM INDEX	UTILIZATION FACTORS (PERCENT) $k(RI) \times RCR = 5$									
k = 0.60	33	20	13	31	19	12	28	17	11	4
0.80	42	27	18	39	26	17	34	23	16	6
1.00	49	34	24	45	32	23	39	30	20	9
1.25	56	40	30	52	38	29	44	33	25	12
1.50	61	46	36	56	43	34	48	37	29	14
2.00	69	55	45	64	51	42	54	44	36	18
2.50	74	61	51	68	57	48	58	49	41	21
3.00	78	67	57	72	62	53	61	53	46	24
4.00	84	74	65	77	68	61	65	58	52	28
5.00	88	79	71	81	73	66	68	62	56	31
ROOM INDEX	UF(total)									Direct
According to DIN EN 13032-2 2004			Suspended				SHRNOM = 1.25			

C Range: 0 - 360DEG  
 C Interval: 22.5DEG  
 Test Speed: HIGH  
 Temperature:25.3DEG  
 Operators:MO FU MEI  
 Test Date:2017-06-19

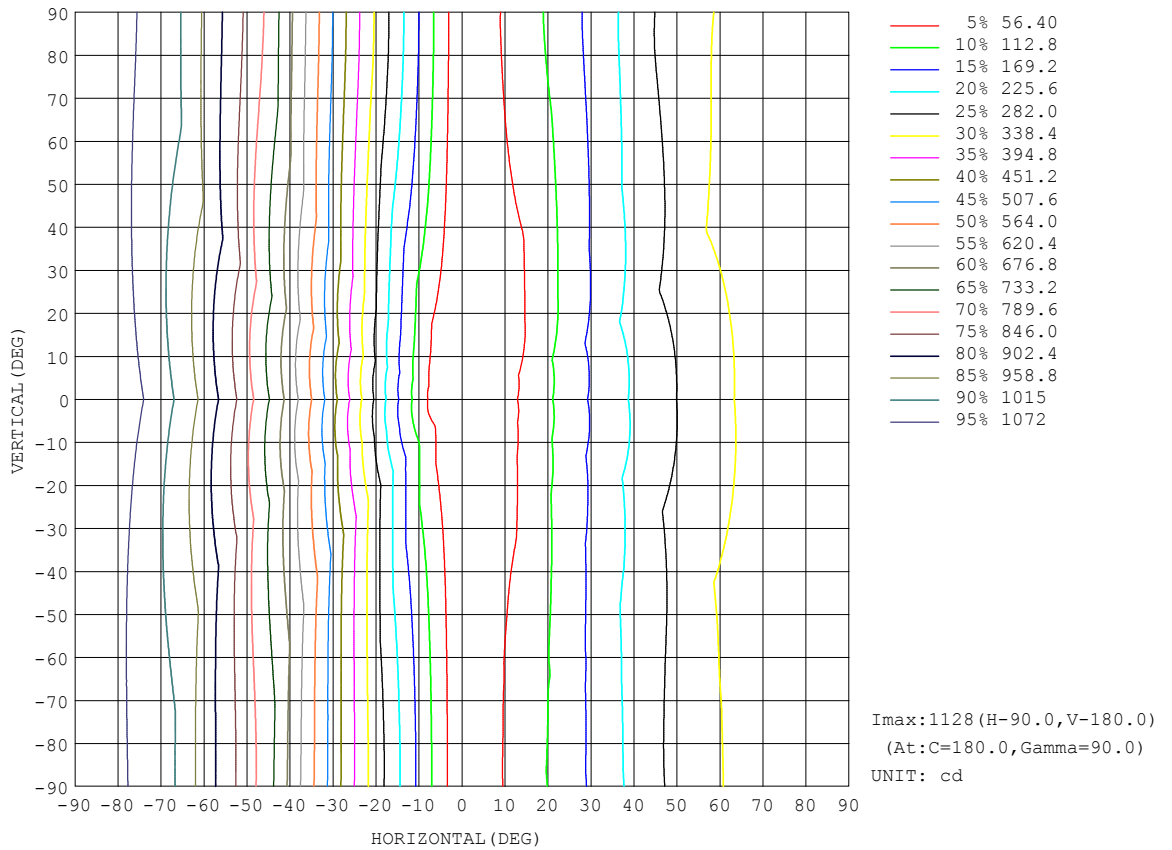
γ Range: 0 - 180DEG  
 γ Interval: 1.0DEG  
 Test System:EVERFINE GO-2000B\_V1 SYSTEM V2.0.361  
 Humidity:65.0%  
 Test Distance:7.000m [K=1.0000]  
 Remarks:



Date:	_____
Project:	_____
Price:	_____

# ISOCANDELA DIAGRAM

Test:U:220.2V I:0.2380A P:50.70W PF:0.9670 Freq:50.00Hz Lamp Flux:4289.17x1 lm		
NAME: SC-SL11070-050-AW-A02-01WW	TYPE:Linear Light	WEIGHT:Kg
SPEC.:50W	DIM.: 1207*70*110 (MM)	SERIAL No.:01
MFR.: Signcomplex	SUR.:1200*70 (MM)	Shielding Angle:120



C Range: 0 - 360DEG  
 C Interval: 22.5DEG  
 Test Speed: HIGH  
 Temperature:25.3DEG  
 Operators:MO FU MEI  
 Test Date:2017-06-19

$\gamma$  Range: 0 - 180DEG  
 $\gamma$  Interval: 1.0DEG  
 Test System:EVERFINE GO-2000B\_V1 SYSTEM V2.0.361  
 Humidity:65.0%  
 Test Distance:7.000m [K=1.0000]  
 Remarks:

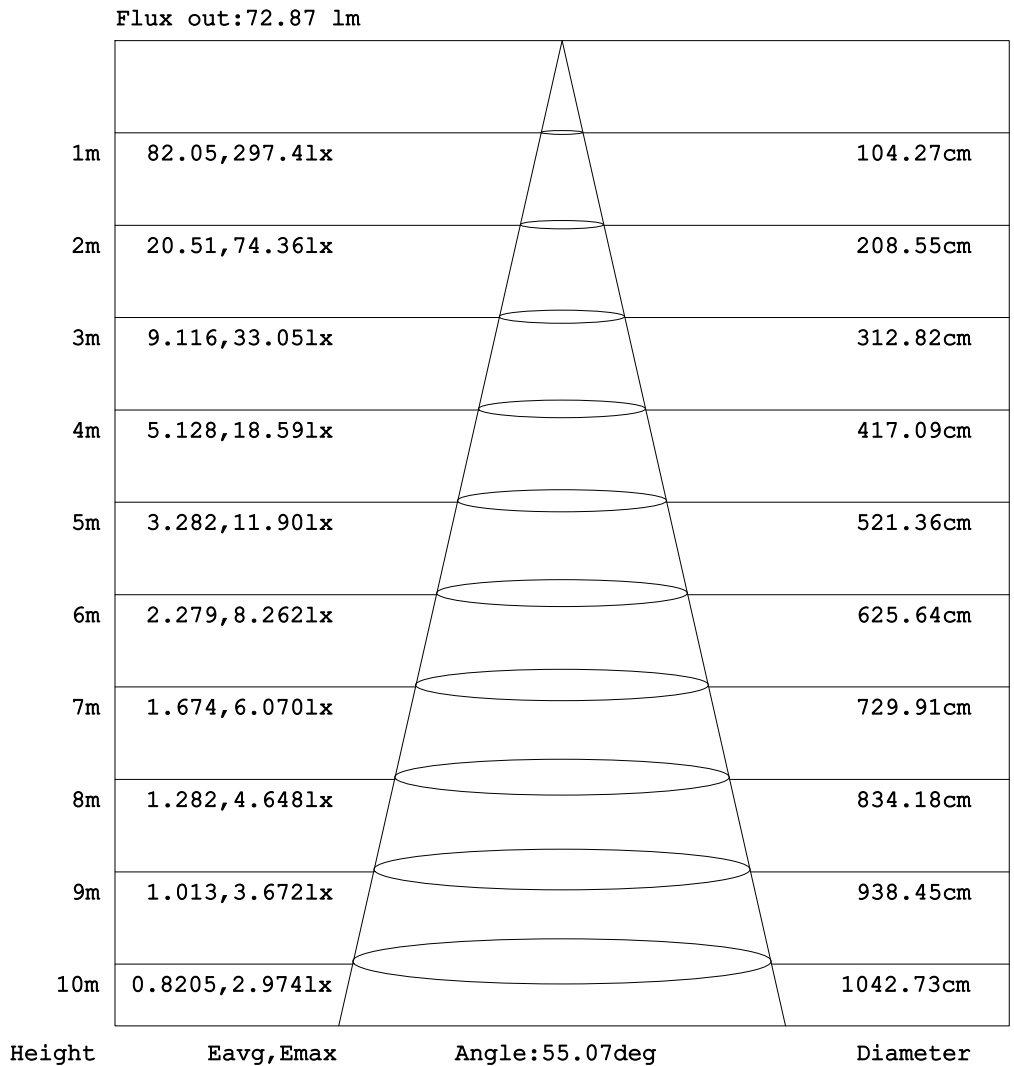




Date:	_____
Project:	_____
Price:	_____

## AAI Figure

Test:U:220.2V I:0.2380A P:50.70W PF:0.9670 Freq:50.00Hz Lamp Flux:4289.17x1 lm		
NAME: SC-SL11070-050-AW-A02-01WW	TYPE:Linear Light	WEIGHT:Kg
SPEC.:50W	DIM.: 1207*70*110 (MM)	SERIAL No.:01
MFR.: Signcomplex	SUR.:1200*70 (MM)	Shielding Angle:120



**Note:**The Curves indicate the illuminated area and the average illumination when the luminaire is at different distance.

C Range: 0 - 360DEG  
 C Interval: 22.5DEG  
 Test Speed: HIGH  
 Temperature:25.3DEG  
 Operators:MO FU MEI  
 Test Date:2017-06-19

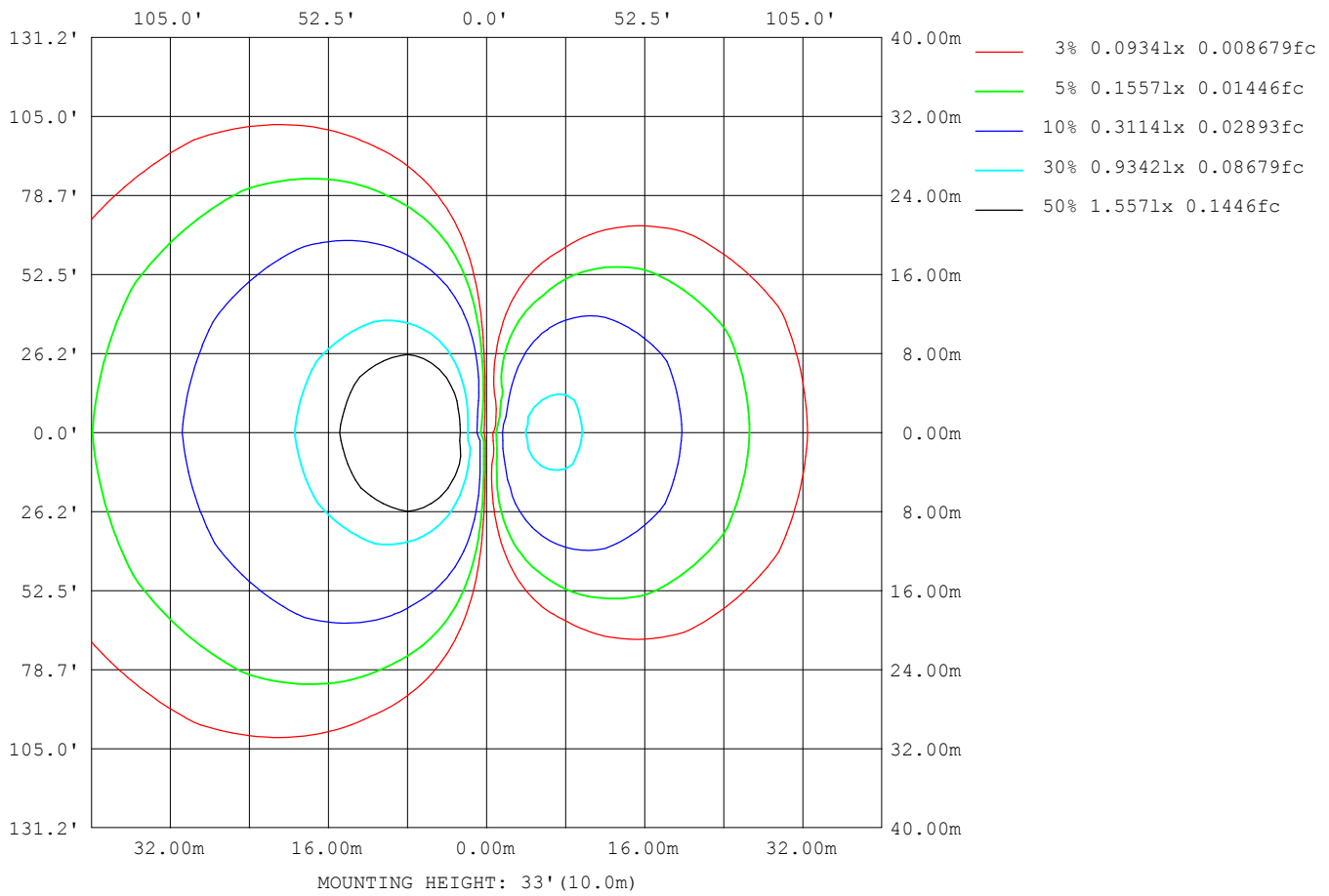
γ Range: 0 - 180DEG  
 γ Interval: 1.0DEG  
 Test System:EVERFINE GO-2000B\_V1 SYSTEM V2.0.361  
 Humidity:65.0%  
 Test Distance:7.000m [K=1.0000]  
 Remarks:



Date:	_____
Project:	_____
Price:	_____

# ISOLUX DIAGRAM

Test:U:220.2V I:0.2380A P:50.70W PF:0.9670 Freq:50.00Hz Lamp Flux:4289.17x1 lm		
NAME: SC-SL11070-050-AW-A02-01WW	TYPE:Linear Light	WEIGHT:Kg
SPEC.:50W	DIM.: 1207*70*110 (MM)	SERIAL No.:01
MFR.: Signcomplex	SUR.:1200*70 (MM)	Shielding Angle:120



C Range: 0 - 360DEG  
 C Interval: 22.5DEG  
 Test Speed: HIGH  
 Temperature:25.3DEG  
 Operators:MO FU MEI  
 Test Date:2017-06-19

γ Range: 0 - 180DEG  
 γ Interval: 1.0DEG  
 Test System:EVERFINE GO-2000B\_V1 SYSTEM V2.0.361  
 Humidity:65.0%  
 Test Distance:7.000m [K=1.0000]  
 Remarks:



Date:	_____
Project:	_____
Price:	_____

## LED Avg.L Report

Test:U:220.2V I:0.2380A P:50.70W PF:0.9670 Freq:50.00Hz Lamp Flux:4289.17x1 lm		
NAME: SC-SL11070-050-AW-A02-01WW	TYPE:Linear Light	WEIGHT:Kg
SPEC.:50W	DIM.: 1207*70*110 (MM)	SERIAL No.:01
MFR.: Signcomplex	SUR.:1200*70 (MM)	Shielding Angle:120

AvgL	cd/m2
L_0~180 (65) av	18885
L_0~180 (75) av	33333
L_0~180 (85) av	103169
L_90~270 (65) av	153
L_90~270 (75) av	247
L_90~270 (85) av	754
L_45 (65) av	12975
L_45 (75) av	22993
L_45 (85) av	71043

Standard: GB/T 29293-2012

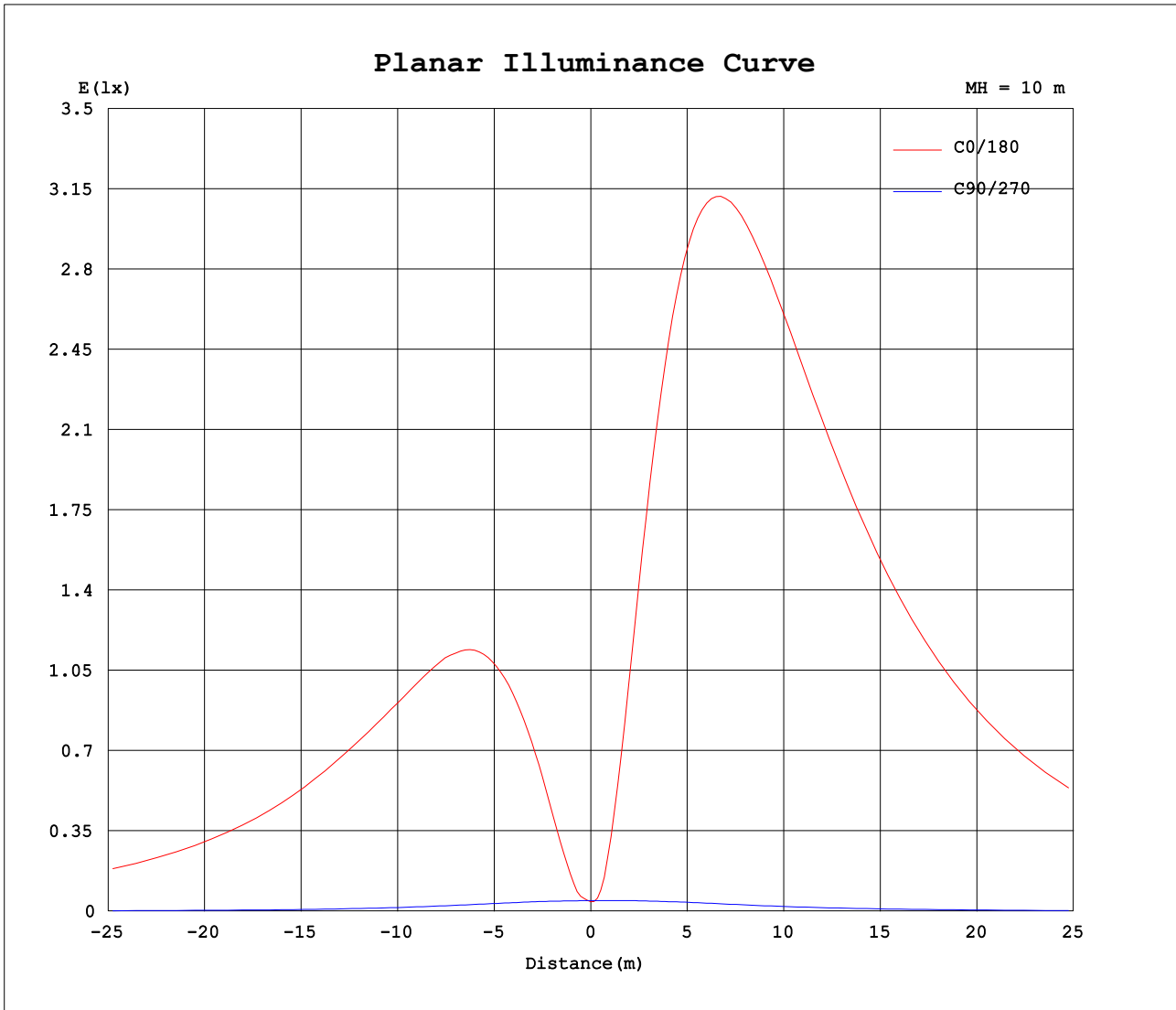
C Range: 0 - 360DEG  
 C Interval: 22.5DEG  
 Test Speed: HIGH  
 Temperature:25.3DEG  
 Operators:MO FU MEI  
 Test Date:2017-06-19

γ Range: 0 - 180DEG  
 γ Interval: 1.0DEG  
 Test System:EVERFINE GO-2000B\_V1 SYSTEM V2.0.361  
 Humidity:65.0%  
 Test Distance:7.000m [K=1.0000]  
 Remarks:



Date:	_____
Project:	_____
Price:	_____

# Planar Illuminance Curve



C Range: 0 - 360DEG  
 C Interval: 22.5DEG  
 Test Speed: HIGH  
 Temperature: 25.3DEG  
 Operators: MO FU MEI  
 Test Date: 2017-06-19

$\gamma$  Range: 0 - 180DEG  
 $\gamma$  Interval: 1.0DEG  
 Test System: EVERFINE GO-2000B\_V1 SYSTEM V2.0.361  
 Humidity: 65.0%  
 Test Distance: 7.000m [K=1.0000]  
 Remarks:



Date:	_____
Project:	_____
Price:	_____

# LUMINOUS DISTRIBUTION INTENSITY DATA

Test:U:220.2V I:0.2380A P:50.70W PF:0.9670 Freq:50.00Hz Lamp Flux:4289.17x1 lm		
NAME: SC-SL11070-050-AW-A02-01WW	TYPE:Linear Light	WEIGHT:Kg
SPEC.:50W	DIM.: 1207*70*110 (MM)	SERIAL No.:01
MFR.: Signcomplex	SUR.:1200*70 (MM)	Shielding Angle:120

Table--1 UNIT: cd

C (DEG) \ γ (DEG)	0	22.5	45	67.5	90	112.5	135	157.5	180	202.5	225	247.5	270	292.5	315	337.5			
0	4.19	4.75	4.91	4.75	4.68	6.27	5.53	4.05	4.19	4.75	4.91	4.75	4.68	6.27	5.53	4.05			
5	12.2	10.6	7.71	5.56	4.62	14.6	26.5	21.9	23.4	22.5	14.4	8.13	4.72	4.53	5.40	9.45			
10	37.7	32.7	21.3	7.58	4.63	30.8	68.1	77.0	86.0	78.6	49.4	20.0	4.90	5.74	12.8	31.4			
15	70.7	62.5	41.5	13.9	4.68	51.4	124	155	174	157	101	38.9	5.03	7.89	29.9	61.1			
20	105	95.0	64.4	22.8	4.69	76.2	186	243	272	247	164	63.0	5.20	14.5	51.5	94.0			
25	140	128	88.6	33.2	4.72	104	253	334	373	340	231	91.1	5.42	23.2	75.7	128			
30	174	160	113	44.7	4.73	133	318	424	471	430	299	122	5.61	33.3	101	161			
35	205	191	136	56.7	4.73	163	382	511	565	517	365	153	5.74	44.3	126	193			
40	232	220	157	68.3	4.73	192	442	593	654	600	429	184	5.83	55.7	150	224			
45	257	248	178	79.1	4.69	219	498	669	736	676	488	216	5.93	67.1	172	252			
50	282	273	198	88.9	4.66	245	550	738	813	747	544	245	6.03	78.3	194	277			
55	306	296	217	98.3	4.62	268	597	801	882	812	594	271	6.11	88.8	213	300			
60	326	315	232	107	4.63	289	638	858	943	869	639	295	6.16	98.6	230	321			
65	344	332	245	112	4.69	307	674	906	997	918	678	317	6.21	107	245	339			
70	359	345	257	118	4.64	322	703	947	1042	961	712	335	6.20	115	258	354			
75	371	355	265	122	4.57	335	727	980	1078	994	739	351	6.18	122	269	365			
80	382	361	270	125	4.63	344	743	1004	1104	1018	759	362	6.32	127	277	373			
85	390	365	273	128	4.61	349	753	1019	1121	1034	772	369	6.44	131	282	377			
90	393	366	273	127	4.56	349	755	1025	1128	1040	777	372	5.73	133	283	375			
95	394	365	274	130	4.88	344	749	1020	1123	1036	774	369	6.03	133	280	369			
100	392	361	262	128	4.78	335	735	1007	1109	1022	763	362	5.78	128	273	360			
105	385	356	252	119	4.80	322	715	985	1086	1000	745	351	5.26	117	256	349			
110	375	342	244	106	4.80	307	687	953	1052	968	721	337	3.59	103	241	340			
115	362	328	217	93.8	4.83	288	654	914	1010	929	690	319	3.41	92.8	211	324			
120	344	303	188	82.6	4.86	267	615	866	959	881	653	298	3.32	83.3	186	299			
125	324	278	166	73.1	4.85	243	571	812	900	826	610	275	3.19	74.4	170	274			
130	300	254	144	62.5	4.82	217	521	750	833	764	562	248	3.03	64.6	149	243			
135	272	219	124	52.5	4.78	188	467	682	760	696	508	220	2.94	55.3	130	204			
140	240	173	103	43.1	5.18	158	409	608	679	621	450	189	3.34	46.3	111	165			
145	207	141	84.5	36.3	5.11	129	347	528	594	540	389	158	5.02	41.1	92.0	138			
150	171	110	66.8	30.0	5.05	99.9	282	442	502	454	323	126	5.03	36.5	73.5	109			
155	136	81.4	52.9	23.4	4.97	72.5	216	354	406	363	255	94.5	4.90	30.0	61.2	81.4			
160	98.9	58.5	39.8	17.0	4.87	48.0	151	262	307	270	186	66.1	4.78	23.1	48.6	57.9			
165	63.6	36.2	26.3	10.9	4.77	27.8	91.2	171	207	179	122	41.2	4.66	16.5	34.0	34.8			
170	31.0	18.0	14.0	6.67	4.68	12.1	42.4	90.6	113	96.2	65.0	21.3	4.49	10.4	19.8	17.0			
175	10.0	6.93	6.08	5.04	4.63	5.20	10.4	29.1	34.1	33.0	23.3	7.89	4.39	6.67	8.39	5.87			
180	6.07	4.94	4.32	4.26	4.64	4.66	4.45	3.52	6.04	4.80	4.36	4.23	4.30	5.06	4.54	3.73			

C Range: 0 - 360DEG  
 C Interval: 22.5DEG  
 Test Speed: HIGH  
 Temperature:25.3DEG  
 Operators:MO FU MEI  
 Test Date:2017-06-19

γ Range: 0 - 180DEG  
 γ Interval: 1.0DEG  
 Test System:EVERFINE GO-2000B\_V1 SYSTEM V2.0.361  
 Humidity:65.0%  
 Test Distance:7.000m [K=1.0000]  
 Remarks:

