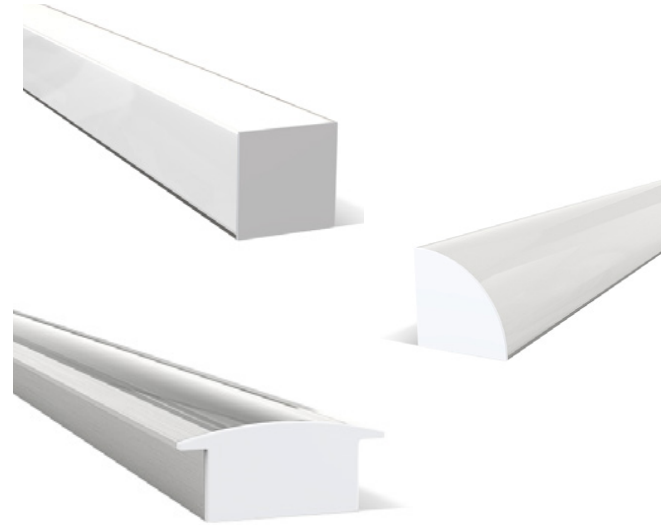




i-LUMINOSITY
LED LIGHTING FIXTURES

Date:	_____
Project:	_____
Price:	_____

LED STRIP & ALUMINUM HOUSING



Description:

RGBW and RGBA LED Strip & Aluminum Housing's are DMX controlled using either 4-in-1 LEDs for excellent color mixing or 3-in-1 RGB LEDs plus white or amber for a brighter or more pastel color. Use with Solarelectricway channel profiles AS6, AT4 or AT5 to create an excellent fixture with no color refraction.

RGB + WHITE: Adds 3000K and 6000K to RGB to replicate tungsten and daylight.

RGB + AMBER: Adds 590 NanoMeter Amber for warm accents.

Features:

- Flexible.
- 3 different wattages.
- 24 Volt input.
- Wattage and lumens based on 1 ft. increments.

SERIES NUMBER	WATTS / SIZE / LUMENS	CCT	FINISH	ADDITIONAL OPTIONS	CHANNEL
ILDCSAHAC	4W- 1 FT / 287	24K - 2400K		DIM - 0-10V DIMMING	*SEE BELOW FOR CHANNEL ITEM OPTIONS*
	8W- 1 FT / 367	27K - 2700K			
		3K - 3000K			
		35K - 3500K			
		4K - 4000K			
		6K - 6000K			
		RGB			

SAMPLE ITEM NUMBER: ILDCSAHAC 8W 4K DIM





i-LUMINOSITY

LED LIGHTING FIXTURES

Date: _____
Project: _____
Price: _____

Channel Options:

LENS OPTIONS

C - CLEAR F - FROSTED M - MILKY G - GRAZER

SURFACE MOUNT CHANNELS



AC1
C, F, M



AC2
C, F, M



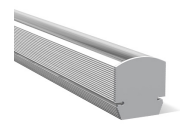
AC3
C, F, M



AC4
C, F, M



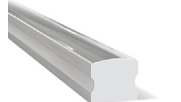
AC5
C, F, M



AP1
C, F, M



AS1
C, F, M



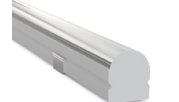
AS2
C, F, M



AS3
C, F, M



AS6
M



AS20G
G



AT4
C, F, M



AT5
C, F, M



AT11
C, F, M



C22
C, F, M



GL1
C, F, M



GL2
C, F, M

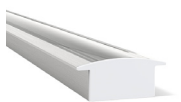


ROUND
C, F, M

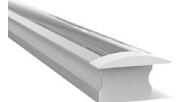


WH35
C, F, M

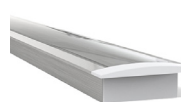
RECESSED CHANNELS



AR1
C, F, M



AR2
C, F, M



AR3
C, F, M



W31
C, F, M





i-LUMINOSITY
LED LIGHTING FIXTURES

Date:	_____
Project:	_____
Price:	_____

LED Strip & Aluminum Housing Specifications:

SPECIFICATIONS	4.4 RGB WHITE/ AMBER	8.8 RGB WHITE/ AMBER	4-IN-1 RGBW + RGBA
Operating Voltage	24 V	24 V	24 V
Power Consumption	4.4 W/ft (14.4 W/m)	8.8 W/ft (28.9 W/m)	5.5 W/ft (18.0 W/m)
Current (mA) - 24V	183 mA/ft (600.2 mA/m)	367 mA/ft (1203.8 mA/m)	271 mA/ft (888.9 mA/m)
LED Pitch	18 LEDs/ft (60 LEDs/m)	36 LEDs/ft (120 LEDs/m)	18 LEDs/ft (60 LEDs/m)
Protection Rating IP20	✓	✓	✓
Protection Rating IP65	✓	✓	✓
Protection Rating IP68	✓	✓	✓
Dimming/Control	*DMX / Lutron A-Series 1% dimming LED drivers		
Operating Temperature	-40° C to 70° C		
Colors/Color Temperatures	RGBW (3000K), RGBW (4000K)*, RGBW (6000K, RGB+Amber		
Lumens - RGBW	287 lm/ft (941 lm/m) All LEDs at 100%	374 lm/ft (1226 lm/m) All LEDs at 100%	279 lm/ft (915 lm/m) All LEDs at 100%
Binning Tolerance	+/- 100K	+/- 150K	+/- 100K
LED Beam Angle	160°	120°	160°
Lamp Life	50,000 Hours	50,000 Hours	50,000 Hours
Cutable Length - 24V	7.84 in (200 mm)	3.94 in (100 mm)	3.94 in (100 mm)
Lumens/Watt - RGBW	65 lm/W (All LEDs at 100%)	43 lm/W (All LEDs at 100%)	51 lm/W (All LEDs at 100%)
Lumens/Watt - RGBA	33 lm/W (All LEDs at 100%)	22 lm/W (All LEDs at 100%)	27 lm/W (All LEDs at 100%)
Constant Voltage	✓	✓	✓
Cable Length	12 in (30.5 cm)		
Certifications	ETL Listed: UL 2108 Issued: 2004/02/27 Ed: 1 Rev: 2014/02/24 Low Voltage Lighting Systems CSA C22.2#9.0 Issued: 1996/06/01 Ed: 1 (R2011) General Requirements for Luminaires; with Gen. Inst. 1: 1997, Gen Inst. 2: 1998. ROHS compliant, UL 2108 - Low Voltage Lighting Systems UL 8750 - Light Emitting Diode (LED) Equipment for Use in Lighting Products UL 1598 / CSA 250.0-08 - Luminaires		





i-LUMINOSITY
LED LIGHTING FIXTURES

Date: _____
Project: _____
Price: _____

Specifications:



24 V DIMENSIONS 4.4 RGB WHITE/ AMBER 8.8 RGB WHITE/ AMBER 4-in-1 RGBW/RGBA

IP20	Width	0.47 in (12 mm)	0.80 in (20.2 mm)	0.47 in (12 mm)
	Max Length*	19 ft 7.9 in (6 m)	19 ft 7.9 in (6 m)	19 ft 7.9 in (6 m)
	Height	0.09 in (2.3 mm)	0.09 in (2.3 mm)	0.09 in (2.3 mm)
IP65	Width	0.47 in (12 mm)	0.80 in (20.2 mm)	0.47 in (12 mm)
	Max Length*	19 ft 7.9 in (6 m)	19 ft 7.9 in (6 m)	19 ft 7.9 in (6 m)
	Height	0.133 in (3.37 mm)	0.09 in (2.3 mm)	0.133 in (3.37 mm)
IP68	Width	0.60 in (15.2 mm)	0.93 in (23.6 mm)	0.60 in (15.2 mm)
	Max Length*	19 ft 7.9 in (6 m)	19 ft 7.9 in (6 m)	19 ft 7.9 in (6 m)
	Height	0.21 in (5.3 mm)	0.09 in (2.3 mm)	0.21 in (5.3 mm)

Diagrams:

24 V DIAGRAMS



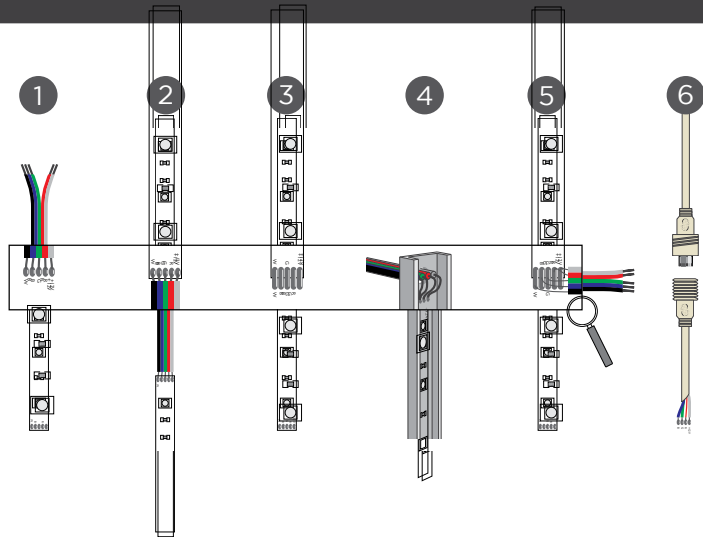
Date:	_____
Project:	_____
Price:	_____

Usage Guidelines:

- When installing this product take into account the surface temperature of the material this product is mounted to. Many building surfaces which are exposed to direct sunlight exceed the 70° C / 158° F maximum that our product is rated for. High risk locations like this should be avoided.
- Our IP65 / IP68 can be used in wet, outdoor locations around swimming pools and spa tubs, but our products are not intended to be submerged in pools and fountains and do not carry UL 676 certification to do so.
- Compatible with a wide variety of control products including the entire line of Lutron dimming systems.
- For use with Solarelectricway drivers, DMX interfaces, and DMX controllers (DMXINF models).
- Use with non-Solarelectricway supplied drivers is not supported or warrantied.
- Due to the nature of the product, RibbonLyte cuttable lengths are generally longer or shorter than the customer requested length. Unless specified, High Lumen Output Accent Light is factory cut at the shorter cuttable point.
- We reserve the right to make changes to product lineup, specifications, design and finishes at any time without notice.

CONNECTION OPTIONS

- 1 - End Feed for Hard Wired Connection
- 2 - Soldered Daisy-Chain
- 3 - Solder Point
- 4 - Back Feed Through Back of Channel
- 5 - Side Feed
- 6 - IP68 Connectors



Date:	_____
Project:	_____
Price:	_____

Channel Compatability :

20 - IP20 65 - IP65 68 - IP68

CHANNELS	RIBBONLYTE					
----------	------------	--	--	--	--	--

	20/65	68	20/65	68	20/65	68
AC1	✓				✓	
AC2	✓				✓	
AC3	✓				✓	
AC4	✓	✓	✓		✓	✓
AC5	✓	✓	✓		✓	✓
AP1	✓				✓	
AR1	✓				✓	
AR2	✓				✓	
AR3	✓	✓	✓	✓	✓	✓
AS1	✓				✓	
AS2	✓				✓	
AS3	✓	✓	✓	✓	✓	✓
AS6	✓	✓			✓	✓
AS20G	✓					
AT4	✓	✓			✓	✓
AT5	✓	✓			✓	✓
AT11	✓	✓			✓	✓
C22	✓	✓	✓	✓	✓	✓
GL1	✓				✓	
GL2	✓				✓	
ROUND	✓				✓	
W31	✓	✓	✓	✓	✓	✓
WH35	✓	✓	✓	✓	✓	✓

