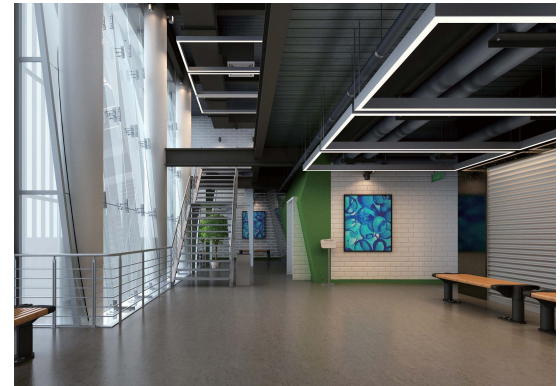


Date:	_____
Project:	_____
Price:	_____

OPTICAL DESIGN LINEAR LIGHT

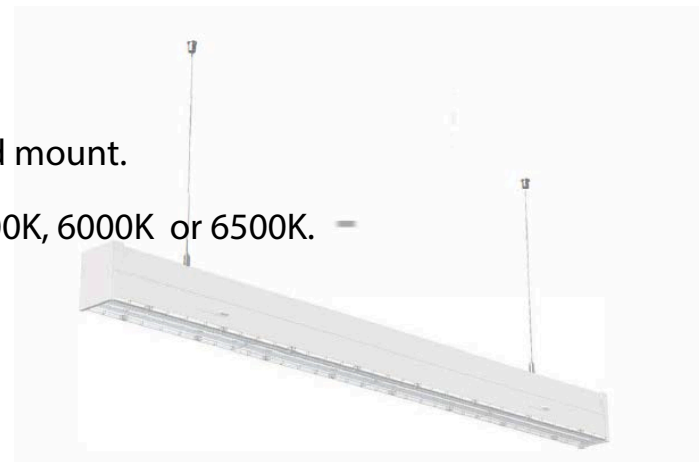
Description:

Optical Design Linear Light is the latest, new led trunking linear system. It is divided into 2 parts and easy to install and maintain. It is pre-mounted with 5 wires, with 0-10V dimming system and it can work at the continuous run 3600W at 277VAC. It is widely used for supermarkets, warehouses, workshops, fairs and so on.

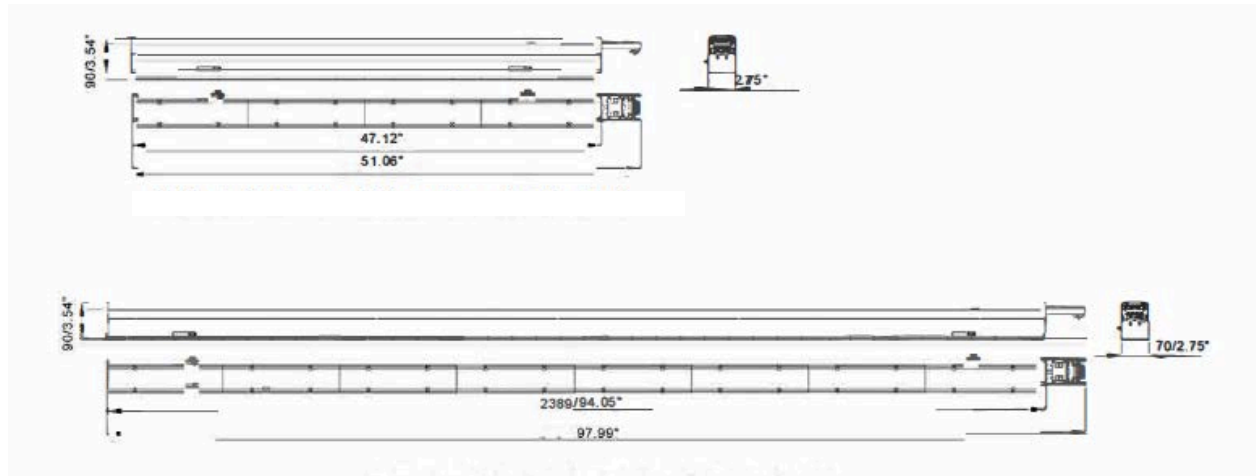


Features:

- Input Power: 100-277VAC, 50/60 Hz
- Power Consumption: 40W & 70W
- Lumen Output: 150Lm/W
- 0-10V dimmable option available.
- Lighting controls option available.
- CRI >90
- L70 Lifetime: >50,000 hours.
- Available Mounting Options: Ceiling or suspended mount.
- Available Lengths: 4 ft & 8 ft.
- Available Color Options: 2800K, 3000K, 3800K, 4200K, 6000K or 6500K.
- Available Finish Options: White, black or grey.
- Beam Angle: 90°
- IP Rating: IP40
- 7 Year Warranty.
- Dimensions: 47.12" x 3.54" x 2.75"
94.05" x 3.54" x 2.75"



Dimensions:



Date:	_____
Project:	_____
Price:	_____

Ordering Key:

SERIES NUMBER	WATTS / SIZE / LUMENS	CCT	FINISH	ADDITIONAL OPTIONS
ILLLODSC	40w - 4 FT / 6,000	28 - 2800K	B - BLACK	DIM - 0-10V DIMMING
	70w - 8 FT / 10,500	32 - 3200K	W - WHITE	EM -EMERGENCY BACKUP
		38 - 3800K	S- SILVER	MS - MOTION SENSOR
		42 - 4200K		
		6 - 6000K		
		65 - 6500K		

SAMPLE ITEM NUMBER: ILLLODSC 70 6 B EM

Electrical Connection:



Electrical Data:

- **Input Power:** Stays consistent over life.
- **Input Voltage:** 100-277 VAC
- **CRI:** >90
- **L70 Lifetime:** >50,000 hours.

Controls:

- This LED fixture is equipped with 0-10V dimming that works universally with any standard 0-10V control or dimmer.

Optical System:

- A unique combination of reflective & refractive optical components achieves a uniform, comfortable look while eliminating pixelation & color fringing.
- Parts work in unison to optimize light distribution, balancing the high delivery of high illuminance levels on horizontal surfaces with an ideal amount of light on walls and vertical surfaces, increasing perception of spaciousness.

